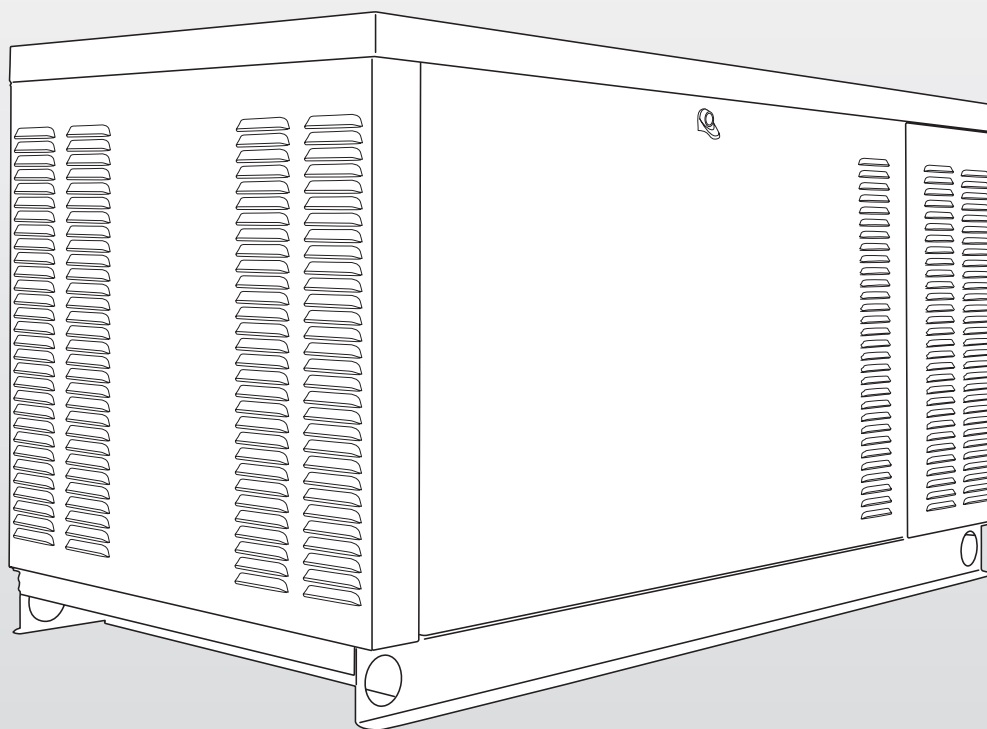


Manual de despiece

Generadores Serie QT

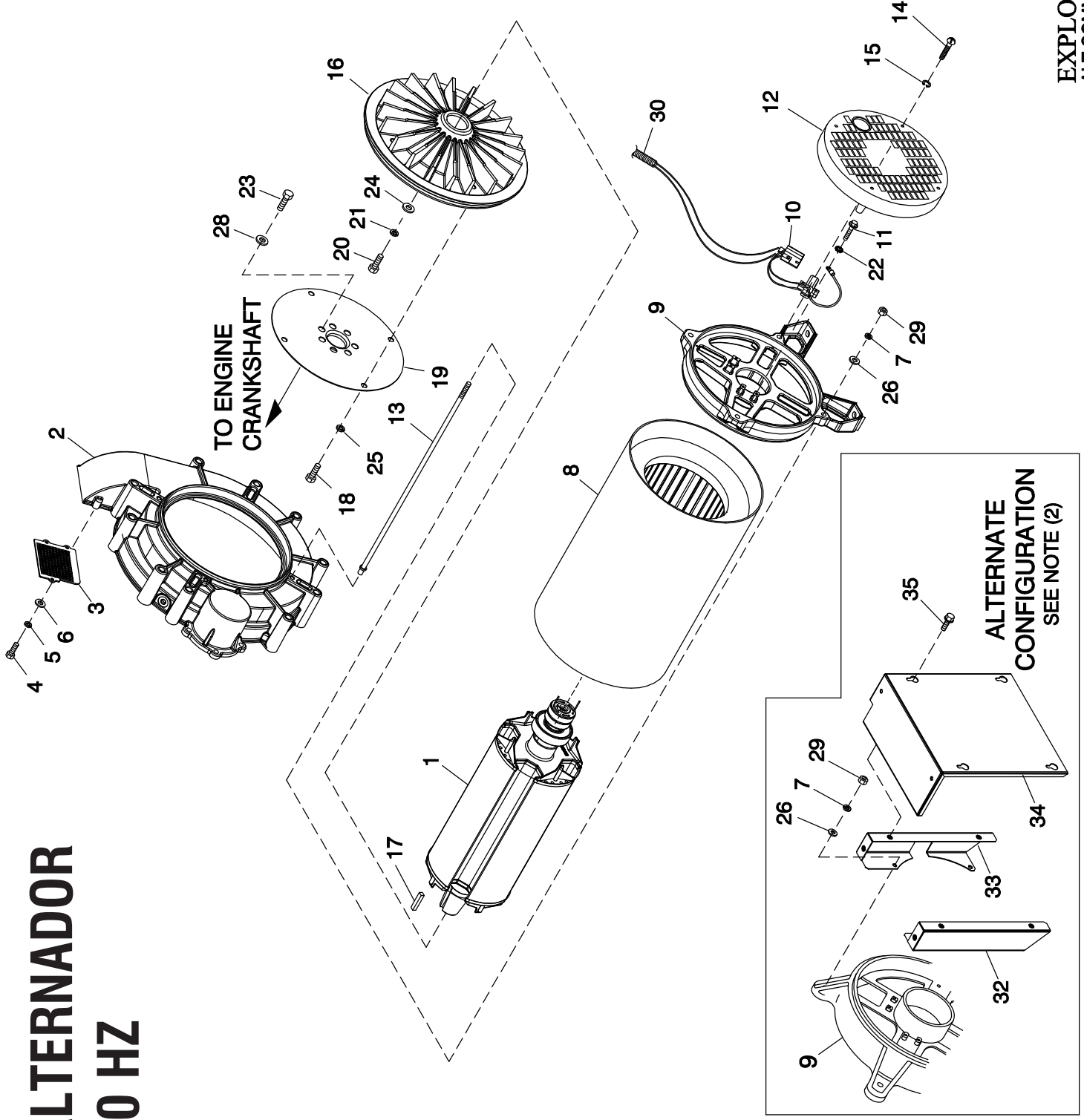
Modelo 27 kW



⚠ PRECAUCIÓN

⚠ NO ESTÁ DESTINADO AL USO EN APLICACIONES CRÍTICAS DE SOPORTE A LA VIDA HUMANA. ¡SOLO ELECTRICISTAS O CONTRATISTAS CALIFICADOS DEBEN INTENTAR LA INSTALACIÓN! ¡GASES DE ESCAPE MORTALES! ¡SOLO PARA INSTALACIÓN EN EXTERIORES!

ALTERNADOR 50 HZ



EXPLODED VIEW:
ALT COMMON PARTS 2.4L 10" ALT 22KW & 27KW
DRAWING #: 0G8881

EXPLODED VIEW: ALT COMMON PARTS 2.4L 10" ALT 22KW & 27KW
 DRAWING #: 0G8881

GROUP A

APPLICABLE TO:

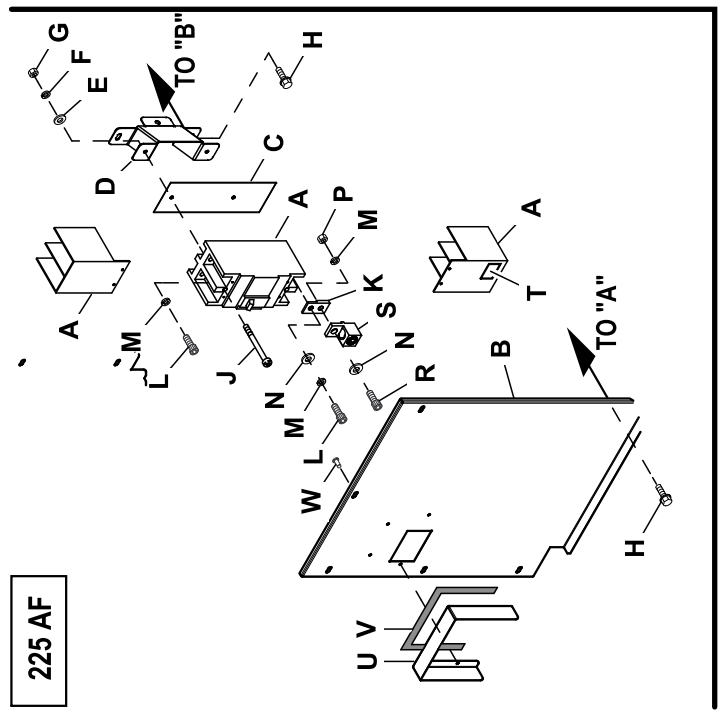
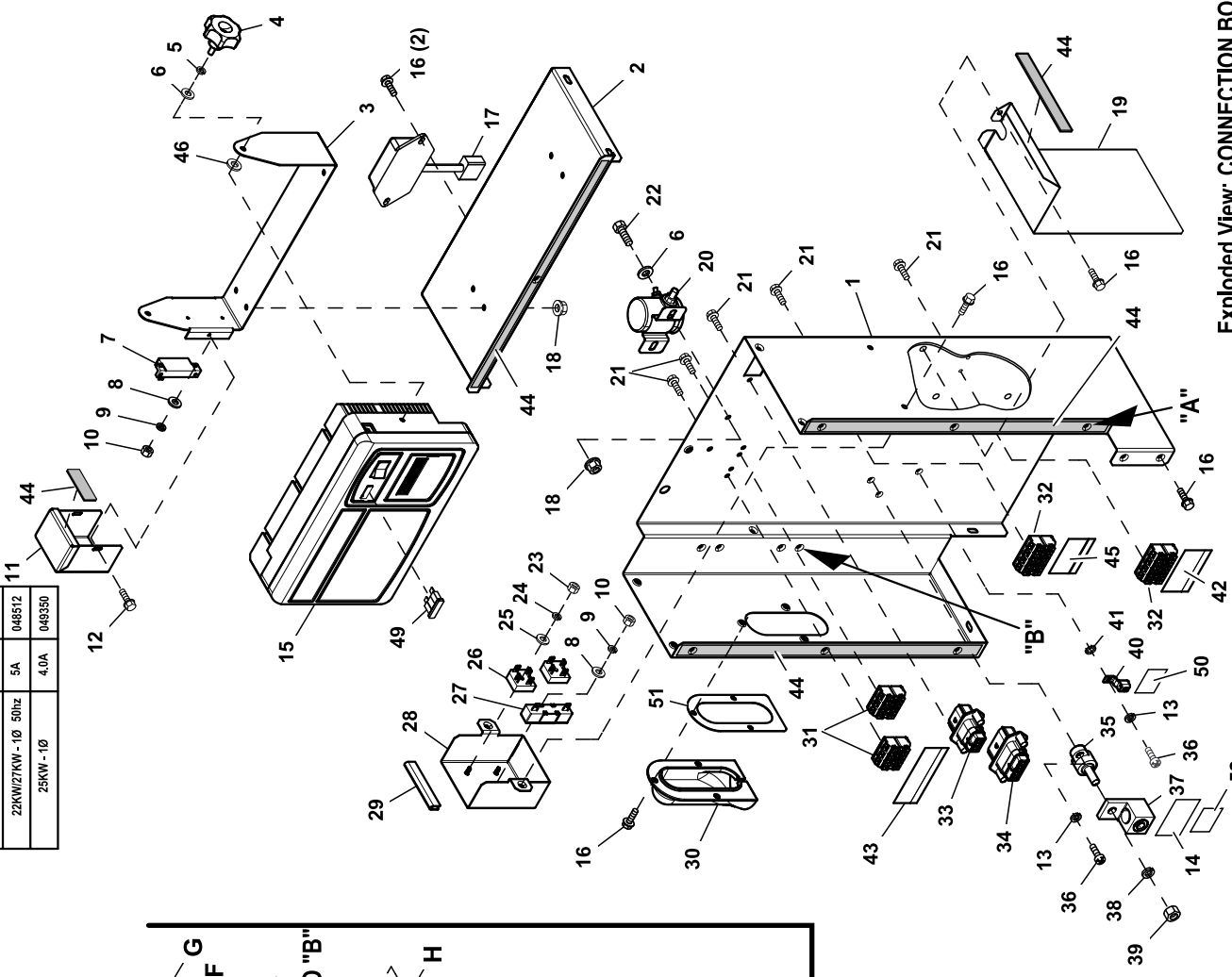
ITEM	PART #	QTY.	DESCRIPTION
1	0G9009	1	RTR-104-22AD1 HI EFF
	0G9011	1	RTR-104-27AD2 HI EFF
	0G9341	1	RTR-104-22GD1 HI EFF
	0G9342	1	RTR-104-27GD2 HI EFF
2	0G8318A	1	HOUSING BLOWER MACHINED 2.4L
3	0G8366	1	BLOWER HOUSING SCREEN
4	020746	3	SCREW PPHM M5-0.8 X 8 ZINC
5	049226	3	WASHER LOCK M5
6	051713	3	WASHER FLAT M5
7	022129	4	WASHER LOCK M8-5/16
8	0G9008	1	STR-104-22AD1 HI EFF
	0G9010	1	STR-104-27AD1 HI EFF
	0G9339	1	STR-104-22GD1 HI EFF
	0G9340	1	STR-104-27GD1 HI EFF
9	0A5382A	1	BEARING CARRIER REAR LG PILOT
10	075591	1	ASSY HOLDER BRUSH
11	051787	4	SCREW HHC M4-0.7 X 16 G8.8
12	0A5601A	1	COVER REAR BEARING
13	0G8827	4	STUD M8-1.25 475 LONG (27KW)
	0G8827A	4	STUD M8-1.25 418 LONG (22KW)
14	0A9375	4	SCREW RHM #10-24 X 2
15	022152	4	WASHER LOCK #10
16	0G8311	1	FLYWHEEL & RINGGEAR ASSY 2.4L
17	042558	1	KEY SQ 3/8 X 1 STEEL
(1) 18	0J6102	4	SCREW HHFC M10-1.5 X 16 C10.9
19	0G8364	1	PLATE FLEX 2.4L 10" ALT
(1) 20	053607	1	SCREW HHC M12-1.75 X 35 G8.8
21	051769	1	WASHER LOCK M12
22	023365	4	WASHER SHAKEPROOF INT #8
(1) 23	0G0114	7	SCREW HHC M12-1.25 X 15 C10.9
24	072578	1	SPACER ROTOR SHAFT
25	0D8427	4	WASHER LOCK M10 RIBBED ZINC
26	0A8830	4	WASHER FLAT .34 ID X .75 OD
27	029333A	7	TIE WRAP UL 7.4"X .19" BLK (NOT SHOWN)
28	063076	7	WASHER FLAT .531 ID X 1.062 OD
29	045771	4	NUT HEX M8-1.25 G8 CLEAR ZINC
30	077043A	1	CONDUIT FLEX .38"ID (18" LG)
31	077043C	1	CONDUIT FLEX .75"ID (18" LG) (NOT SHOWN)

(1) APPLY MEDIUM STRENGTH BLUE THREADED LOCKING FLUID TO THREADS.

TABLERO DE COMANDO

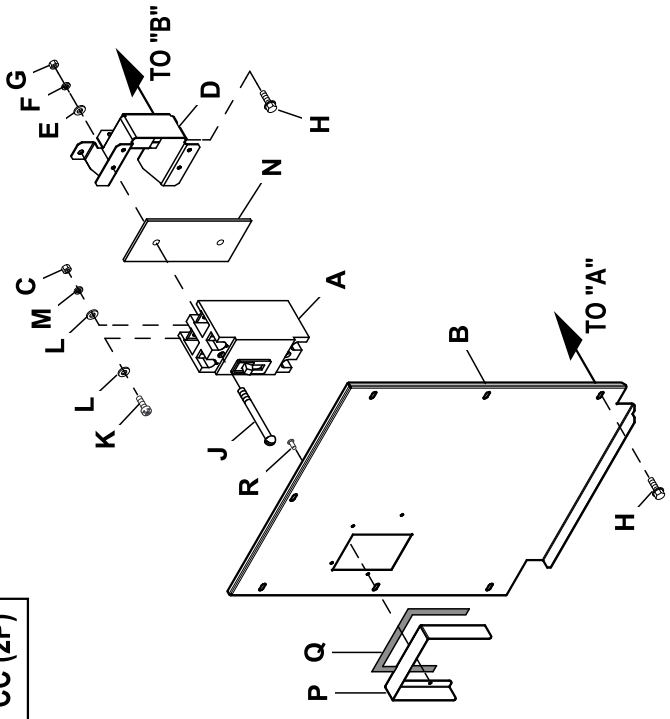
225 AF

C1 DPE BREAKER SELECTION		ITEM 7	ITEM 7
MODEL RATING	RATING	RATING	PIN
22KW/27KW - 1Ø	3A	054502	
30KW - 1Ø	4.5A	048476	
25KW/30KW - 3Ø	5.5A	054450	
22KW/27KW - 3Ø	6A	048505	
22KW/27KW - 1Ø 50Hz	5A	048512	
25KW - 1Ø	4.0A	049350	

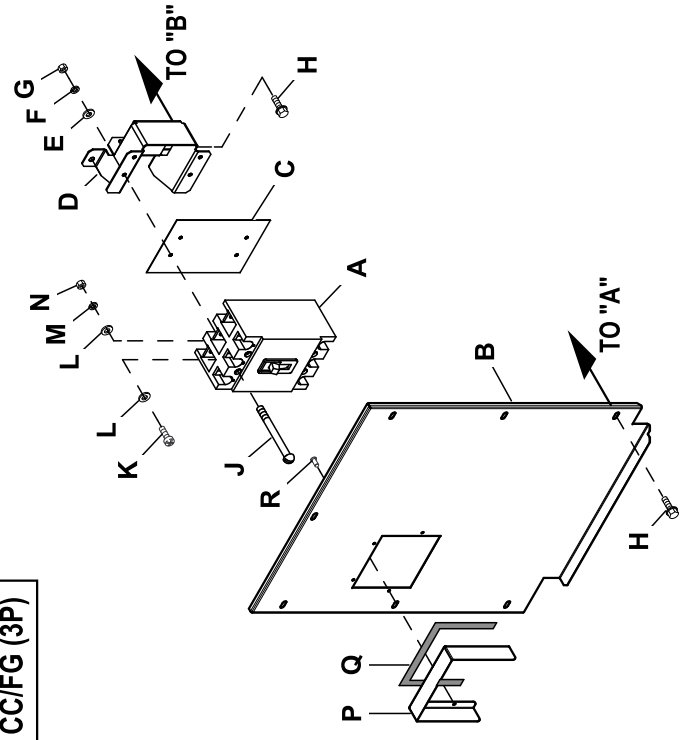


LLAVE PRINCIPAL

CC (2P)

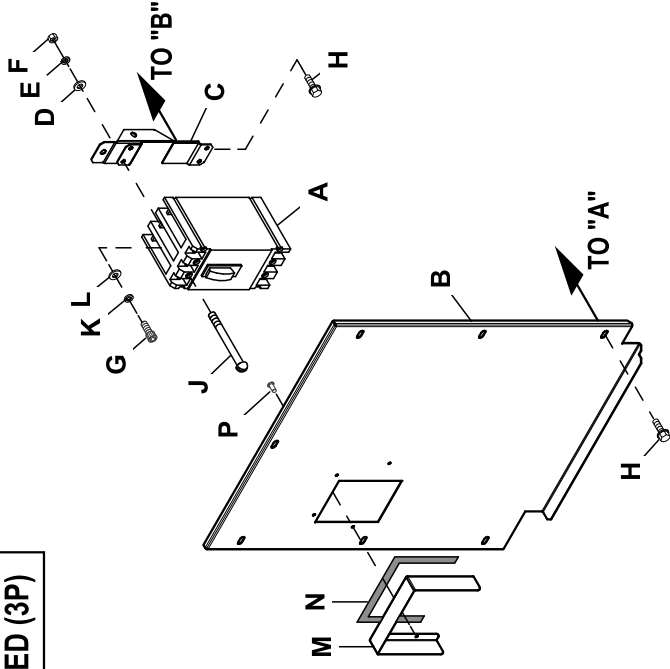


CC/FG (3P)

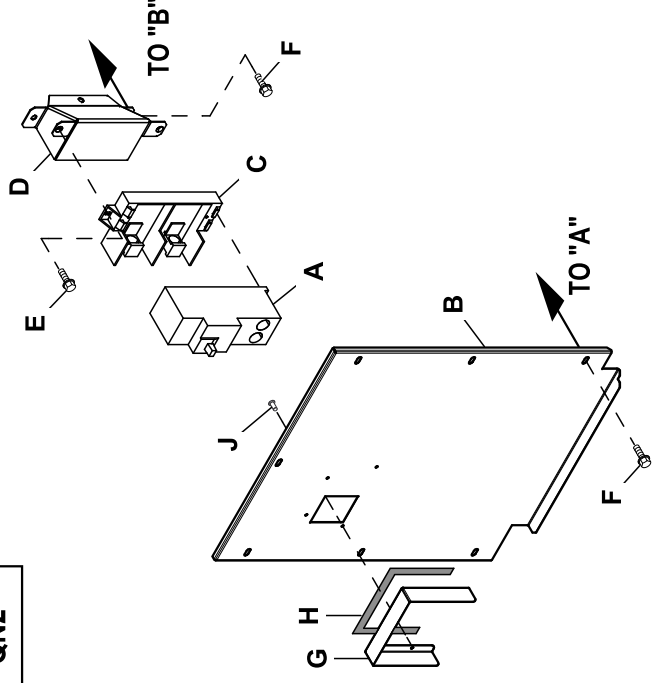


GROUP A

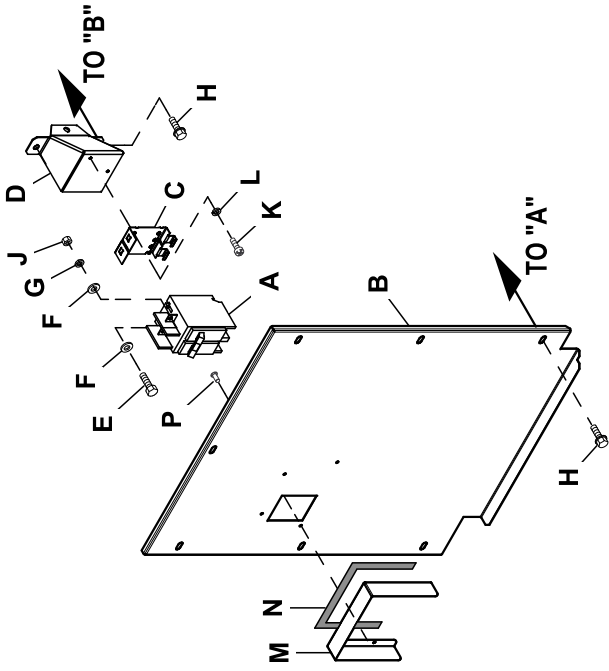
ED (3P)



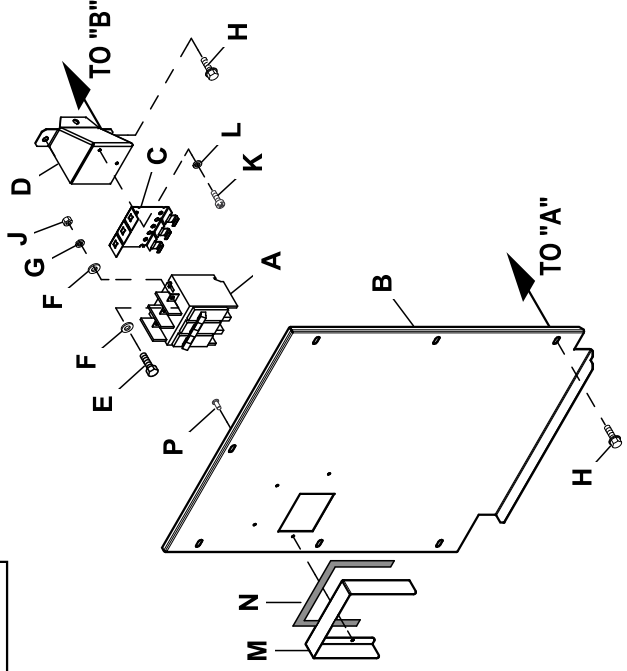
QN2



BQ (2P)



BQ (3P)



EXPLODED VIEW: CONNECTION BOX C1 CPL

DRAWING #: 0H7234

GROUP A

APPLICABLE TO:

ITEM	PART#	QTY.	DESCRIPTION
1	0H6795	1	CONBOX BACK/SIDES C1 CPL
2	0H6796	1	CONBOX TOP C1 CPL
(4)3	0H67330STOR	1	BRACKET GIMBAL CONTROL PNL RAW
4	0H7115	2	KNOB M6-1.0 CONTROL PANEL
5	022097	2	WASHER LOCK M6-1/4
6	022473	4	WASHER FLAT 1/4-M6 ZINC
(3)7	SEE CHART	1	CIRCUIT BREAKER
8	052777	3	WASHER FLAT M3
9	043182	3	WASHER LOCK M3
10	051714	3	NUT HEX M3-0.5 G8 CLEAR ZINC
(4)11	0H81040AS0R	1	COVER DPE BREAKER NEXUS
12	045764	2	SCREW HHTT M4-0.7 X 8 ZP
13	022264	3	WASHER LOCK #8-M4
14	0A9457	1	DECAL NEUTRAL
15	REF	1	ASSY CTRL PROGRAMMED
16	0C2454	18	SCREW HWHT M6-1 X 16 N WA Z/JS
(2)17	0A1354A	1	REGULATOR - DC ALT
18	0D3700	6	NUT FLANGE M6-1.0 NYLON
(4)19	0H88380STOR	1	SHIELD HIGH/LOW C1 RAW
20	056739	1	RELAY SOLENOID 12VDC PNL MNT
21	0F5458	12	SCREW HHSP #10 X 3/8 HI-LOW
22	042568	2	SCREW HHC M6-1.0 X 20 C8.8
23	051716	2	NUT HEX M5-0.8 G8 CLEAR ZINC
24	049226	2	WASHER LOCK M5
25	051713	2	WASHER FLAT M5
26	0D7177V	2	DIODE BRIDGE 1P 35A 1000V
27	0F5752F	1	RES WW 15R 5% 25W QK CONN
28	0H6267	1	COVER VOLTAGE SHIELD
29	056326	1	TRIM VINYL BLACK 1/8GP (3"LG)
30	0G3524	1	COVER BELL HOUSING CONBOX
(1)31	0D7393T	REF	TERM BLOCK 3P UL 12-20AWG
(1)32	0D7393U	REF	TERM BLOCK 4P UL 12-20AWG
(1)33	0F5376S0AR	REF	MX150L SLRRMNT 22-18 8P W/O GA
(1)34	0F5396S0AR	REF	MX150L SLRRMNT 22-18 12P W/OGA
35	057073	1	JUNCTION BLOCK 3/8-16
36	0C2265	3	SCREW PHTT M4-0.7 X 12 ZP
37	057329	1	LUG SLDLSS 350-#6X13/32 AL/CU
38	022237	1	WASHER LOCK 3/8
39	022241	1	NUT HEX 3/8-16 STEEL
40	025433	1	LUG SLDLSS #6-14 X 13/64 CU
41	023762	1	WASHER LOCK EXT #10 STL
42	0H7292	1	DECAL CUSTOMER CONTROL CONNECT
43	0H7293	1	DECAL CONBOX TB1 CONNECTIONS
44	029289	1	TAPE ELEC 1/2 FOAM (62" LG)
45	0J0489	1	DECAL CUSTOMER POWER CONNECT
46	0A2115	2	WASHER NYLON .257
47	0F6146	1	HANG TAG 2 WIRE START (NOT SHOWN)
48	0H6692	1	HARN CONBOX NEXUS (NOT SHOWN)
49	0D7178T	REF	FUSE ATO TYPE 7.5AMP (BROWN)
50	067210A	1	DECAL GROUND LUG
51	0J6701	1	GASKET WIRE ENTRY COVER
52	0H8006	1	DECAL CAUTION ELEC SHOCK SM
UL CIRCUIT BREAKER (225AF)			
A	0G5249	REF	CB 150A 2 POLE 240V 225AF
B	0H6846	1	COVER CB G 225AF C1 CONBOX
C	0F8432A	1	INSULATOR CB 2P 225AF
D	0G5734	1	SPRT CIRCUIT BREAKER G 225AF
E	038150	2	WASHER FLAT #8 ZINC
F	022264	2	WASHER LOCK #8-M4
G	022471	2	NUT HEX #8-32 STEEL
H	0C2454	10	SCREW HWHT M6-1 X 16 N WA Z/JS
J	053640	2	SCREW RHM #8-32 X 3-1/4
K	0F8843	2	BUS BAR 200A LUG ADAPTOR
L	049897	4	SCREW SHC M8-1.25 X 20 G8

EXPLODED VIEW: CONNECTION BOX C1 CPL

DRAWING #: 0H7234

GROUP A

APPLICABLE TO:

ITEM	PART#	QTY.	DESCRIPTION
M	022129	6	WASHER LOCK M8-5/16
N	022145	4	WASHER FLAT 5/16-M8 ZINC
P	045771	2	NUT HEX M8-1.25 G8 CLEAR ZINC
R	058306	2	SCREW SHC M8-1.25 X 25 C12.9
S	0F8451	2	LUG SLDLSS 300 MCM-6 AL/CU
T	0G3259	1	DECAL TERMINAL SHOCK HZD BI
U	0J78230ASOR	1	SHIELD CB HANDLE CONBOX
V	029289	1	TAPE ELEC 1/2 FOAM
W	036261	4	RIVET POP .125 X .275 SS

(1) ITEMS INCLUDED WITH HARNESS P/N 0H6692.

(2) ITEMS USED ON 1.6L MODELS ONLY.

(3) SEE "C1 DPE BREAKER SELECTION" TABLE.

(4) SHEET METAL PARTS LISTED IN THE BOM TABLE ARE REPRESENTING GENERIC PARTS (NO COLOR)

- MANUFACTURING: FOR CORRECT MATERIAL AND COLOR REFER TO AS400 BOM.
- CUSTOMER: WHEN ORDERING REPLACEMENT PARTS ENTER BASE NUMBER (FIRST 6 DIGITS ONLY) IN THE SYSTEM FOR CORRECT MATERIAL AND COLOR (FOR REFERENCE SEE GUIDELINE 0H7169).

EXPLODED VIEW: CONNECTION BOX C1 CPL

DRAWING #: 0H7234

GROUP A

APPLICABLE TO:

ITEM	PART#	QTY.	DESCRIPTION
UL CIRCUIT BREAKER (CC 2P)			
A	0H4745	REF	CB 0100A 2P 240V E CC LL
	0H4746	REF	CB 0125A 2P 240V E CC LL
	0H4747	REF	CB 0150A 2P 240V E CC LL
B	0H6847	1	COVER CB E CC 2P C1 CONBOX
C	051716	2	NUT HEX M5-0.8 G8 CLEAR ZINC
D	0H4656	1	CIRCUIT BREAKER SUPPORT (CC)
E	038150	2	WASHER FLAT #8 ZINC
F	022264	2	WASHER LOCK #8-M4
G	022471	2	NUT HEX #8-32 STEEL
H	0C2454	10	SCREW HWHT M6-1 X 16 N WA Z/JS
J	053640	2	SCREW RHM #8-32 X 3-1/4
K	091526	2	SCREW PPHM M5-0.8 X 12 ZNC
L	023897	4	WASHER FLAT #10 ZINC
M	049226	2	WASHER LOCK M5
N	0H4698	1	INSULATOR CB 2P E TYPE CC
P	0J78230ASOR	1	SHIELD CB HANDLE CONBOX
Q	029289	1	TAPE ELEC 1/2 FOAM
R	036261	4	RIVET POP .125 X .275 SS
UL CIRCUIT BREAKER (CC/FG (3P))			
A	0H4913	REF	CB 0100 3P 240V E CC LL
	0H4914	REF	CB 0125 3P 240V E CC LL
	0H5488	REF	CB 0080 3P 600V E FG LL
	0H5489	REF	CB 0090 3P 600V E FG LL
B	0H7294	1	CB COVER E CC/FG 3P C1 CONBOX
C	0H4698A	1	INSULATOR CB 3P E TYPE CC/FG
D	0H4656	REF	CIRCUIT BREAKER SUPPORT (CC)
	0H5604	REF	CIRCUIT BREAKER SUPPORT (FG)
E	038150	4	WASHER FLAT #8 ZINC
F	022264	4	WASHER LOCK #8-M4
G	022471	4	NUT HEX #8-32 STEEL
H	0C2454	10	SCREW HWHT M6-1 X 16 N WA Z/JS
J	053640	4	SCREW RHM #8-32 X 3-1/4 (CC)
	0H5721	4	SCREW PPHM #8-32 X 1-3/4 ZINC (FG)
K	091526	3	SCREW PPHM M5-0.8 X 12 ZNC
L	023897	6	WASHER FLAT #10 ZINC
M	049226	3	WASHER LOCK M5
N	051716	3	NUT HEX M5-0.8 G8 CLEAR ZINC
P	0J78230ASOR	1	SHIELD CB HANDLE CONBOX
Q	029289	1	TAPE ELEC 1/2 FOAM
R	036261	4	RIVET POP .125 X .275 SS

EXPLODED VIEW: CONNECTION BOX C1 CPL

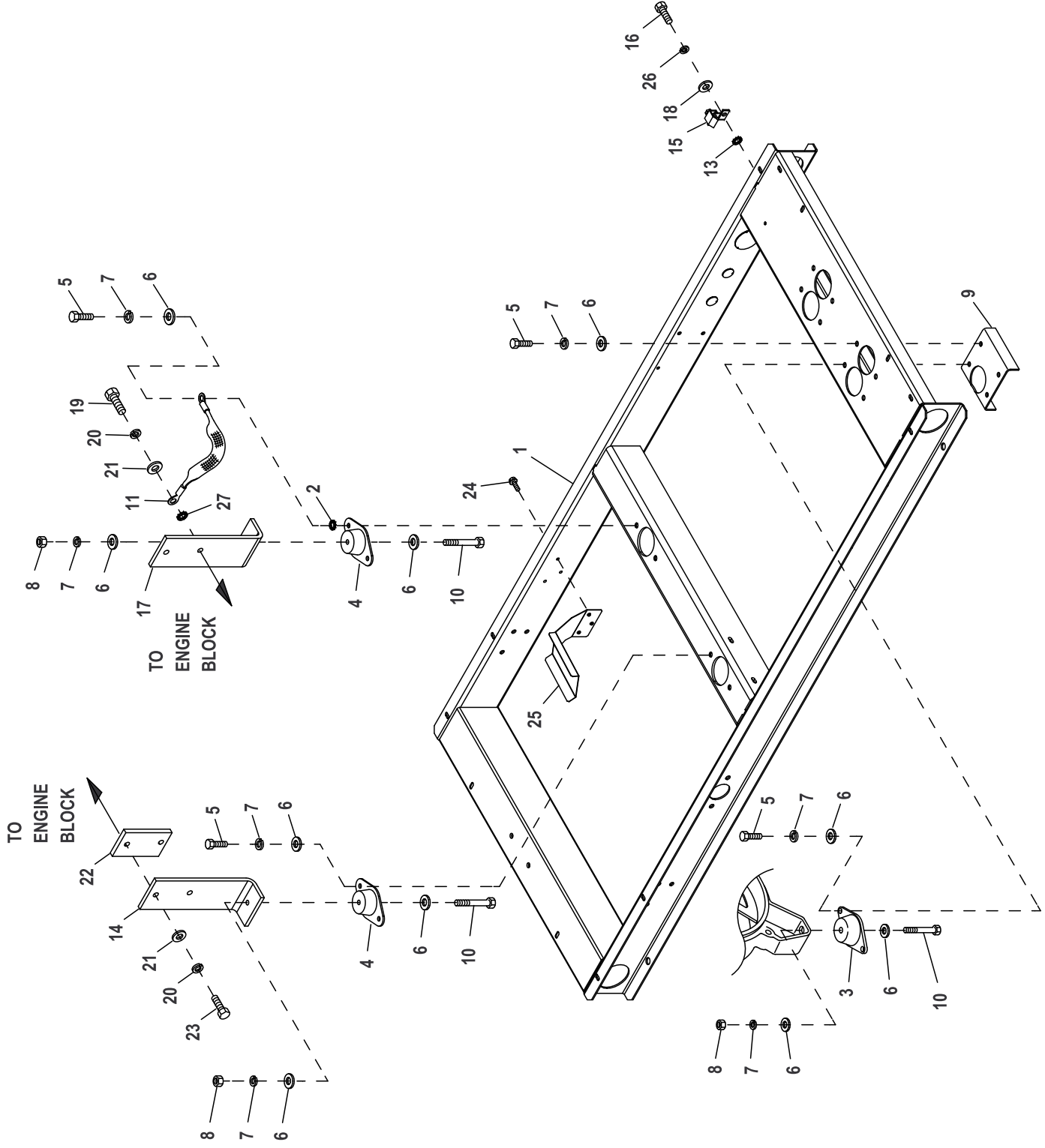
DRAWING #: 0H7234

GROUP A

APPLICABLE TO:

ITEM	PART#	QTY.	DESCRIPTION
UL CIRCUIT BREAKER (BQ 2P)			
A	0D5543	REF	CB 0090A 2P 240V S BQ2 LL
	0D5544	REF	CB 0100A 2P 240V S BQ2 LL
	0A2077	REF	CB 0125A 2P 240V S BQ2 LL
B	0H6842	1	COVER CB S BQ2 C1 CONBOX
C	0E7890	1	BRKT CB MTG BACK
D	0G4497	1	CIRCUIT BREAKER SUPPORT (BQ)
E	052619	2	SCREW HHC M5-0.8 X 20 G8.8
F	023897	4	WASHER FLAT #10 ZINC
G	049226	2	WASHER LOCK M5
H	0C2454	10	SCREW HWHT M6-1 X 16 N WA Z/JS
J	051716	2	NUT HEX M5-0.8 G8 CLEAR ZINC
K	0G9708	2	SCREW PHTT M4-0.7 X 8 ZP
L	022264	2	WASHER LOCK #8-M4
M	0J78230ASOR	1	SHIELD CB HANDLE CONBOX
N	029289	1	TAPE ELEC 1/2 FOAM
P	036261	4	RIVET POP .125 X .275 SS
UL CIRCUIT BREAKER (BQ 3P)			
A	062812	REF	CB 0080A 3P 240V S BQ3 LL
	053691	REF	CIRCT BRK 90 X 3 ITE BQ3-B090
	040532	REF	CB 0100A 3P 240V S BQ3 LL
B	0H6843	1	COVER CB S BQ3 C1 CONBOX
C	0E6002	1	MTG TRACK BQ SIEMENS CB 3P
D	0G4497	1	CIRCUIT BREAKER SUPPORT (BQ)
E	052619	3	SCREW HHC M5-0.8 X 20 G8.8
F	023897	6	WASHER FLAT #10 ZINC
G	049226	3	WASHER LOCK M5
H	0C2454	10	SCREW HWHT M6-1 X 16 N WA Z/JS
J	051716	3	NUT HEX M5-0.8 G8 CLEAR ZINC
K	0G9708	2	SCREW PHTT M4-0.7 X 8 ZP
L	022264	2	WASHER LOCK #8-M4
M	0J78230ASOR	1	SHIELD CB HANDLE CONBOX
N	029289	1	TAPE ELEC 1/2 FOAM
P	036261	4	RIVET POP .125 X .275 SS
UL CIRCUIT BREAKER (ED 3P)			
A	0D5552	REF	CB 0050A 3P 480V S ED4 LL
	0D5556	REF	CB 0090A 3P 480V S ED4 LL
	0D5557	REF	CB 0100A 3P 480V S ED4 LL
	0D9693	REF	CB 0125A 3P 480V S ED4 LL
B	0H6844	1	COVER CB S ED3 C1 CONBOX
C	0G4498	1	CIRCUIT BREAKER SUPPORT (ED)
D	038150	4	WASHER FLAT #8 ZINC
E	022264	4	WASHER LOCK #8-M4
F	022471	4	NUT HEX #8-32 STEEL
G	0A8278	3	SCREW SHC 1/4-28 X 3/4 G8.8 NZ
H	0C2454	10	SCREW HWHT M6-1 X 16 N WA Z/JS
J	066715	4	SCREW RHM #8-32 X 4-1/2
K	022097	3	WASHER LOCK M6-1/4
L	0D5621	3	WASHER-STEP 1/2ODX9/32ID BRASS
M	0J78230ASOR	1	SHIELD CB HANDLE CONBOX
N	029289	1	TAPE ELEC 1/2 FOAM
P	036261	4	RIVET POP .125 X .275 SS
UL CIRCUIT BREAKER (QN2 2P)			
A	0E7283	REF	CB 0150A 2P 240V S QN2 LL
B	0H6845	1	COVER CB S QN2 C1 CONBOX
C	0E3664	1	BASE, QN CIRCUIT BREAKER
D	0G4112	1	BREAKER SUPPORT BRACKET 30KW
E	074908	2	SCREW HHTT M5-0.8 X 10 BP
F	0C2454	10	SCREW HWHT M6-1 X 16 N WA Z/JS
G	0J78230ASOR	1	SHIELD CB HANDLE CONBOX
H	029289	1	TAPE ELEC 1/2 FOAM
J	036261	4	RIVET POP .125 X .2

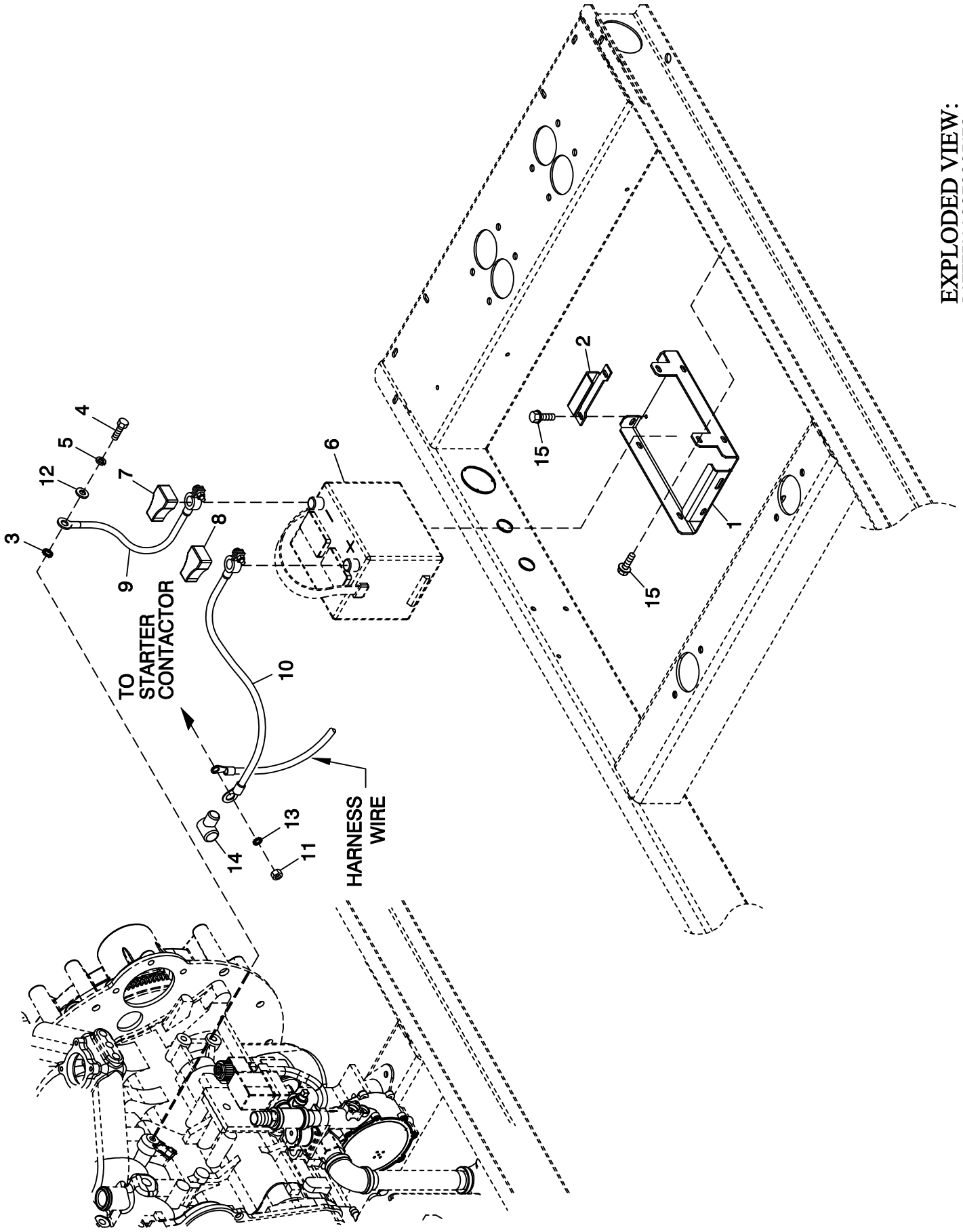
CHASIS



EXPLODED VIEW: MOUNTING BASE 2.4L**DRAWING #: 0G8784****GROUP C****APPLICABLE TO:**

ITEM	PART#	QTY.	DESCRIPTION
1	0G83760ST03	1	MOUNTING BASE 2.4L
2	027482	2	WASHER SHAKEPROOF EXT 5/16 STL
3	070936	2	DAMPENER VIBRATION
4	070936C	2	VIB. ISO. 70-75 DURO
5	039253	12	SCREW HHC M8-1.25 X 20 G8.8
6	022145	20	WASHER FLAT 5/16 ZINC
7	022129	16	WASHER LOCK M8-5/16
8	045771	4	NUT HEX M8-1.25 G8 YEL CHR
9	0G3461	2	ALTERNATOR SUPPORT BLOCK OFF
10	051730	4	SCREW HHC M8-1.25 X 60 G8.8
11	021991	1	EARTH STRAP
13	026850	1	WASHER SHAKEPROOF EXT 1/4 STL
14	0G8429AST03	1	SUPPORT ENGINE LEFT SIDE
15	055414	1	LUG SLDLSS #2-#8 X 17/64 CU
16	047411	1	SCREW HHC M6-1.0 X 16 G8.8
17	0G84290ST03	1	SUPPORT ENGINE RIGHT SIDE
18	022473	5	WASHER FLAT 1/4-M6 ZINC
19	062963	2	SCREW HHC M10-1.25 X 30 C8.8
20	046526	4	WASHER LOCK M10
21	022131	4	WASHER FLAT 3/8-M10 ZINC
22	0F9596A	1	SPACER LH ENGINE MOUNT
23	052211	2	SCREW HHC M10-1.25 X 40 C8.8
24	0C2454	3	SCREW HWHT M6-1 X 16 N WA Z/JS
25	0H6121	1	HEAT SHIELD 2.4L G2
26	022097	1	WASHER LOCK M6-1/4
27	025507	1	WASHER LOCK EXT 7/16 STL

GROUP C



EXPLODED VIEW:
BATTERY ACCESSORIES
DRAWING #: 0G8894

EXPLODED VIEW: BATTERY ACCESSORIES

DRAWING #: 0G8894

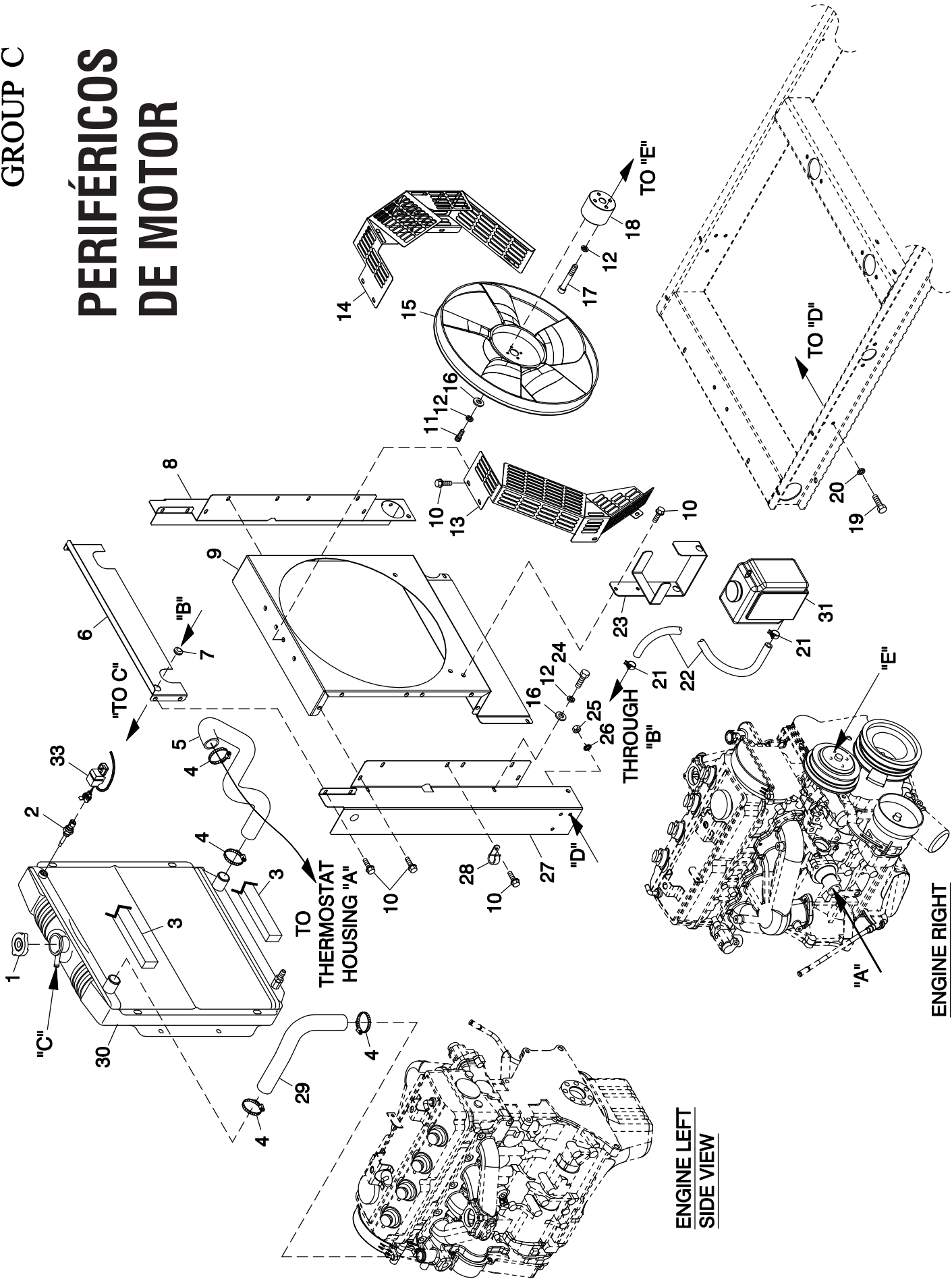
GROUP C

APPLICABLE TO:

ITEM	PART #	QTY.	DESCRIPTION
1	0F3408C	1	BATTERY TRAY, C1 & C2
2	0F3411	1	STRAP BATTERY RETAINMENT
3	025507	1	WASHER SHAKEPROOF EXT 7/16 STL
4	052212	1	SCREW HHC M10-1.25 X 25 C8.8
5	046526	1	WASHER LOCK M10
6	077483	REF	BATTERY 12VDC 75-AH 26 (SOLD AS AN OPTION)
7	050331A	REF	BATTERY POST COVER RED +
8	050331	REF	BATTERY POST COVER BLK -
9	038805J	1	CABLE BATTERY BLACK #1 X 30.00
10	038804M	1	CABLE BATTERY RED #1 X 21.00
11	045771	REF	NUT HEX M8-1.25 G8 YEL CHR
12	022131	1	WASHER FLAT 3/8-M10 ZINC
13	027482	1	WASHER SHAKEPROOF EXT 5/16 STL
14	0F3976	1	BOOT CONTACTOR CABLES
15	0C2454	6	SCREW THF M6-1 X 16 N WA Z/JS

GROUP C

PERIFÉRICOS DE MOTOR



EXPLODED VIEW: COOLING SYSTEM 2.4L C1

DRAWING #: 0G8886

GROUP C

APPLICABLE TO:

ITEM	PART #	QTY.	DESCRIPTION
1	046627	1	CAP RADIATOR 14PSI
2	0E2507	1	PROBE COOLANT LEVEL 3/8NPTF
	0H1827	1	PROBE COOLANT LEVEL 3/8-18NPTF (USE WITH I/N 33, P/N 0H1851)
3	052250	2	TAPE FOAM 1 X 1 (21" LG)
4	099502	4	CLAMP HOSE #24 B1.06-2.00
5	0G8831	1	HOSE LOWER RADIATOR 2.4L
6	0G81290GS0R	1	BLOCK OFF RADIATOR 2.4L
7	0F9504	1	GROMMET 5/8"X 1 1/8"X 5/16"
8	0G81280GS0R	1	SUPPORT RADIATOR RH SIDE 2.4L
9	0G81260GS0R	1	VENTURI 2.4L
10	0C2454A	25	SCREW THF M6-1 X 12 N WA Z/JS
11	042568	4	SCREW HHC M6-1.0 X 20 G8.8
12	022097	12	WASHER LOCK M6-1/4
13	0G89420GS0R	1	GUARD FAN LH
14	0G89430GS0R	1	GUARD FAN RH
15	0G8803	1	FAN COOL 460MM DIA 5 BLADE
16	022473	8	WASHER FLAT 1/4-M6 ZINC
(1) 17	082460	4	SCREW SHC M6-1.0 X 65 C12.9
18	0G8993	1	ADAPTER FAN 2.4L
(1) 19	039253	6	SCREW HHC M8-1.25 X 20 G8.8
20	022129	6	WASHER LOCK M8-5/16
(2) 21	048031C	2 (REF)	CLAMP HOSE BAND 1/4
22	029032	1	HOSE 9/32 ID (47" LG)
23	080713	1	BRACKET COOLANT TANK
24	0C8566	4	SCREW HHFC M6-1.0 X 20 G8.8
25	045771	6	NUT HEX M8-1.25 G8 CLEAR ZINC
26	027482	6	WASHER SHAKEPROOF EXT 5/16 STL
27	0G81270GS0R	1	SUPPORT RADIATOR LH SIDE 2.4L
28	082121A	1	CLIP-J VINYL COAT .375 ID
29	0G8830	1	HOSE UPPER RADIATOR 2.4L
30	0E9837C	1	RADIATOR
31	076749	1	TANK COOLANT RECOVERY
32	029333A	9	TIE WRAP UL 7.4" X .19" BLK (NOT SHOWN)
(3) 33	0H1851	1	ASSY PCB LCL SENSOR (USE WITH I/N 2, P/N 0H1827 ONLY)

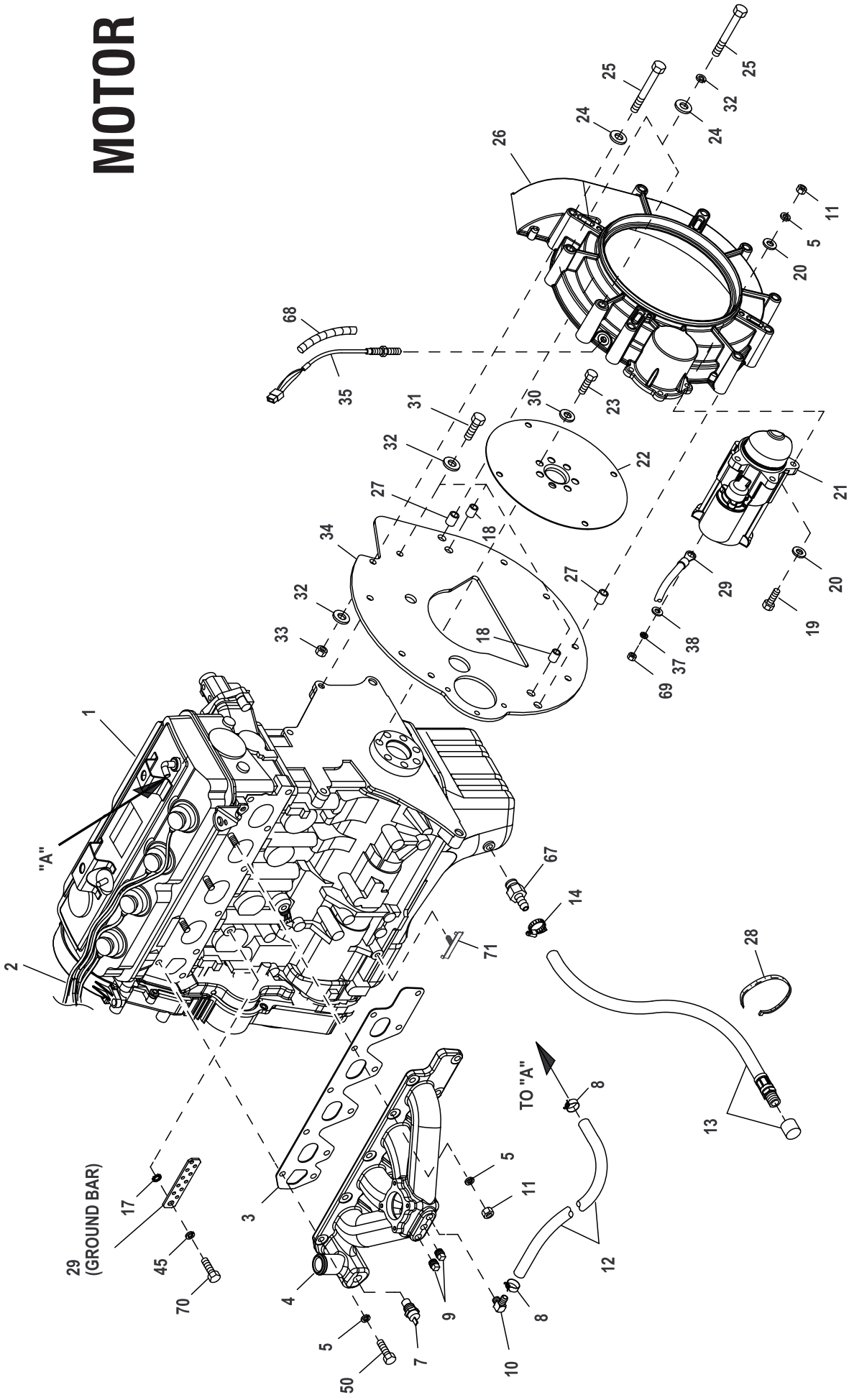
(1) APPLY MEDIUM STRENGTH BLUE THREAD LOCKING FLUID TO THREADS.

(2) INCLUDED WITH I/N 25.

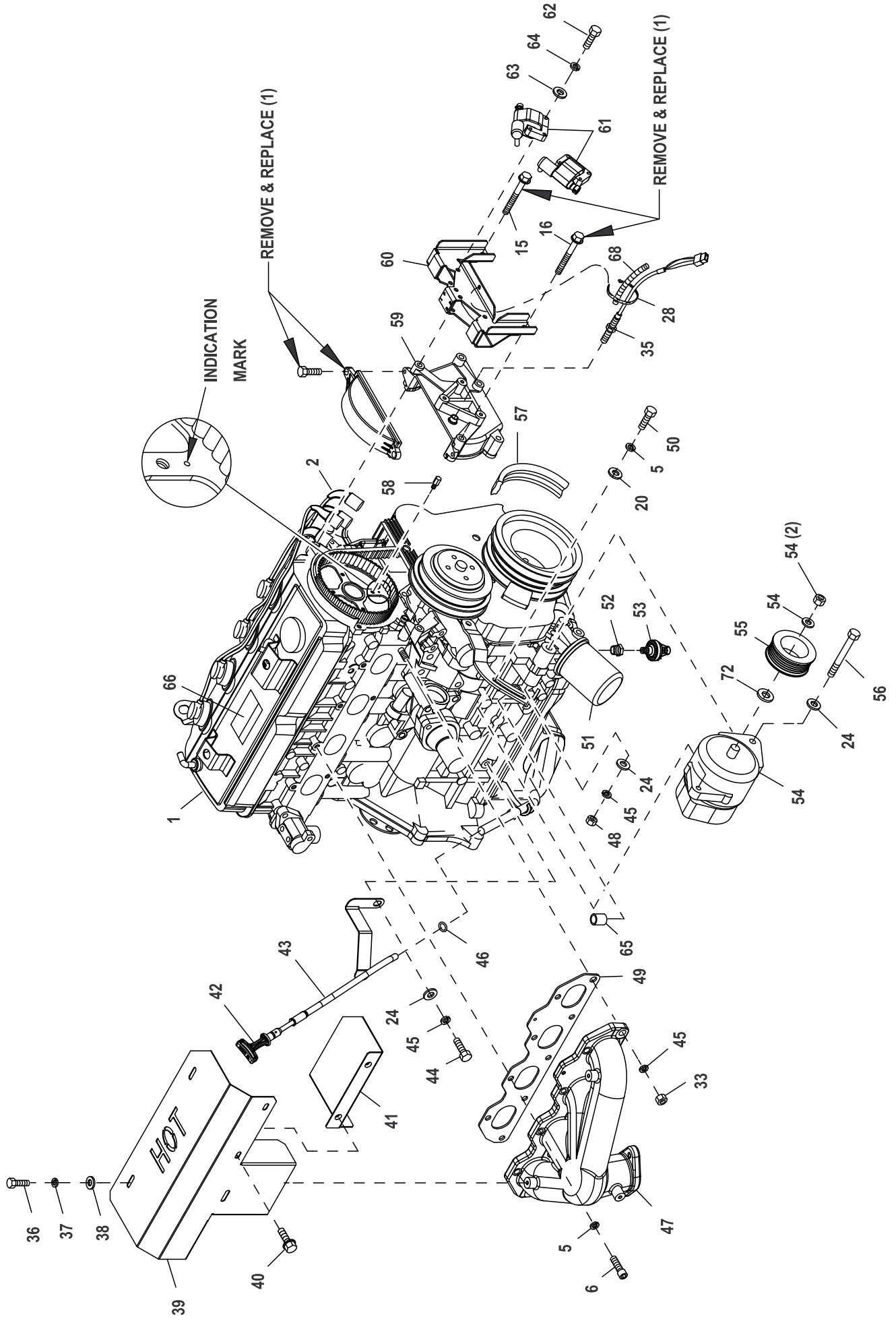
(3) USE WITH R-200 CONTROL PANEL ONLY.

GROUP D

MOTOR



GROUP D



EXPLODED VIEW: ENGINE COMMON PARTS 2.4L G2

DRAWING #: 0H7325

GROUP D

APPLICABLE TO:

ITEM	PART#	QTY.	DESCRIPTION
1	0H1619	1	ENGINE 2.4L G2
2	0G8854	1	SPARK PLUG WIRE SET 2.4L G2 IG
(1) 3	0G0950	1(REF)	GASKET INTAKE MANIFOLD G2
4	0G8488	1	MANIFOLD INTAKE (MACHINED)
5	022129	22	WASHER LOCK M8-5/16
6	058306	7	SCREW SHC M8-1.25 X 25 C12.9
7	0A6751	1	SWITCH HI-TEMP 245D X 3/8 NPT
	0E0502	1	TEMPERATURE SENDER, DELPHI
8	048031J	2	CLAMP HOSE BAND .63
9	026073A	2	PLUG STD PIPE 1/4 STEEL SQ HD
10	049340	1	BARBED EL 90 1/4 NPT X 3/8
11	045771	6	NUT HEX M8-1.25 G8 CLEAR ZINC
12	047290	1	HOSE 3/8 ID SINGLE BRAID (15" LG)
13	069860C	1	HOSE OIL DRAIN ASSY 21"
14	0C7649	1	CLAMP HOSE .38-.87
(1) 15	052203	1(REF)	SCREW HHC M8-1.25 X 70 C8.8
(1) 16	052265	1(REF)	SCREW HHC M8-1.25 X 65 C8.8
17	025507	1	WASHER SHAKEPROOF EXT 7/16 STL
18	0G8759A	2	BUSHING GUIDE 11.3MM LONG
19	039287	3	SCREW HHC M8-1.25 X 45 C8.8
20	022145	7	WASHER FLAT 5/16-M8 ZINC
21	0G7461	1	MOTOR STARTER
22	0G8364	1(REF)	PLATE FLEX 2.4L 10" ALT
(2) 23	0G0114	7(REF)	SCREW HHC M12-1.25 X 15 C10.9
24	022131	13	WASHER FLAT 3/8-M10 ZINC
25	0G9255	10	SCREW HHC M10-1.25 X 100 PC8.8
26	0G8318A	1(REF)	HOUSING BLOWER MACHINED 2.4L
27	0G8759	2	BUSHING GUIDE 19.3MM LONG
28	029333A	3	TIE WRAP UL 7.4"X .19" BLK
29	0H6689	1	HARN ENG G2.4L G2 NEXUS (NOT SHOWN)
30	063076	7(REF)	WASHER FLAT .531 ID X 1.062 OD
31	052830	3	SCREW HHC M10-1.25 X 45 C8.8
32	0D8427	13	WASHER LOCK M10 RIBBED ZINC
33	046525	10	NUT HEX M10-1.25 G8 YEL CHR
34	0G8365	1	ADAPTER ENGINE PLATE 2.4L G2
(2) 35	0D2244M	2	ASSY MAGPICKUP (3/8-24 MALE)
36	043116	3	SCREW HHC M6-1.0 X 12 G8.8
37	022097	4	WASHER LOCK M6-1/4
38	022473	4	WASHER FLAT 1/4-M6 ZINC
39	0G92210AS0R	1	SHIELD EXHAUST
40	0D6029	3	SCREW HHTT M6-1.0 X 16 ZYC
41	0G0792A	1	SHIELD HEAT SML
42	0H6859P	1	ASSEMBLY DIPSTICK G2.4L
43	0G8427A	1	ASSY DIPSTICK TUBE 2.4 G2
44	052213	1	SCREW HHC M10-1.25 X 20 C8.8
45	046526	5	WASHER LOCK M10
46	0G3823	1	O-RING SIZE 9.0MM X 2.0MM NITR
47	0G3910	1	EXHAUST MANIFOLD G2 (MACHINE)
48	045772	1	NUT HEX M10-1.5 G8 YEL CHR
(1) 49	0G0951	1(REF)	GASKET EXHAUST MANIFOLD
50	0A8258	9	SCREW HHC M8-1.25 X 25 C10.9
(1) 51	0A45310244	1(REF)	FILTER 1.5L/2.4L G2 OIL
52	042574	1	ADAPTOR 1/8 NPTF TO 1/8 BSPT
53	0A8584	1	SWITCH OIL PRESSURE 10 PSI 2 POL
54	0E9868A	1	ALTERNATOR DC W/OUT PULLEY
55	0H8572	1	PULLEY DC ALTERNATOR
56	0E4507	1	SCREW HHC M10-1.5 X 120 C8.8
57	0D3488S	1	BELT SERPENTINE 37.0"
58	0G1472A	1	CAM SENSOR PIN ASSY
59	0G1477	1(REF)	COVER CAM GEAR G2 REWORKED
60	0G8852	1	BRACKET ASM-2.4L COIL G2
61	0G8853	4	COIL-2.4L G2 IGNITION
62	034413	8	SCREW HHM #10-32 X 1-1/4
63	023897	8	WASHER FLAT #10 ZINC

EXPLODED VIEW: ENGINE COMMON PARTS 2.4L G2

DRAWING #: 0H7325

GROUP D

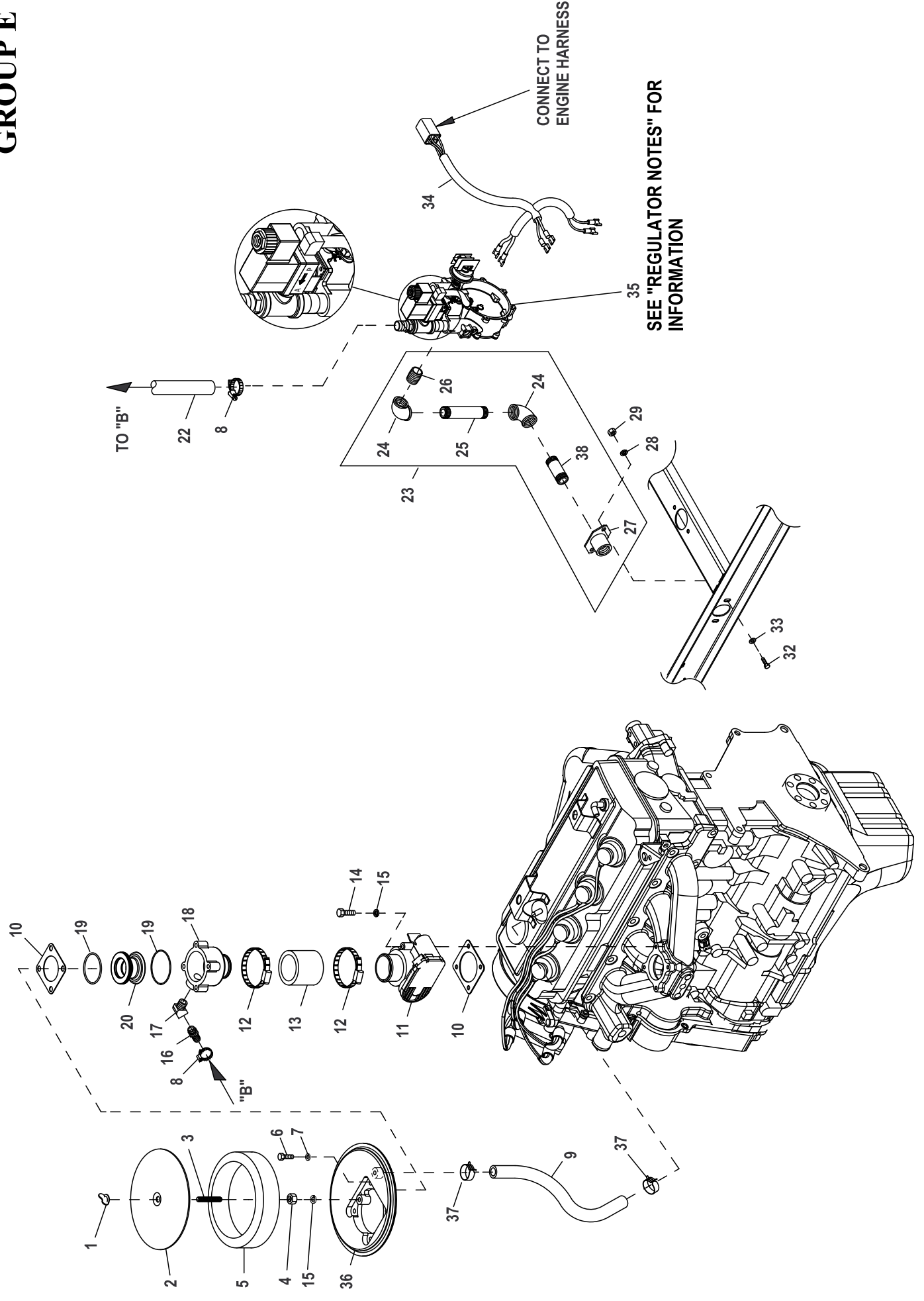
APPLICABLE TO:

ITEM	PART#	QTY.	DESCRIPTION
64	022152	8	WASHER LOCK #10
(1) 65	0G9520	1 (REF)	PLUG TAPER
66	0G9378	1 (REF)	DECAL SORE EPA CERTIFICATION
67	0C1852	1	ADAPTER DRAIN OIL
68	077043H	2	CONDUIT FLEX .25"ID (6"LG)
69	049813	1	NUT HEX M6 X 1.0 G8 YEL CHR
70	052213	1	SCREW HHC M10-1.25 X 20 C8.8
71	0F4001E	1	ANCHOR HARNESS
72	0F3217	1	SPACER DC ALTERNATOR PULLEY

(1) SUPPLIED WITH ENGINE

(2) APPLY MEDIUM STRENGTH BLUE LOCKING FLUID TO THE THREADS.

GROUP E



EXPLODED VIEW: FUEL SYSTEM 2.4L G2 22&27KW**DRAWING #: 0H7578****GROUP E****APPLICABLE TO:**

ITEM	PART#	QTY.	DESCRIPTION
1	037561	1	NUT WING 1/4-20 NYLK
2	0A5547	1	COVER AIR CLEANER
3	062522	1	STUD TH 1/4-20 X 3 G2 ZNC FULL
4	022127	1	NUT HEX 1/4-20 STEEL
5	059402	1	FILTER ELEMENT
6	091526	4	SCREW PPHM M5-0.8 X 12 ZNC
7	049226	4	WASHER LOCK M5
8	057823	2	CLAMP HOSE #10 .56-1.06
9	047290	1	HOSE 3/8 ID SINGLE BRAID (15" LG)
10	0E6586	2	GASKET BOSCH 32
11	0E4395	1	ACTUATOR BOSCH 32 GOVERNOR
12	035685	2	CLAMP HOSE #28 1.32-2.25
13	057753B	1	HOSE 1.5 ID X 2 LG 20R4
14	051767	4	SCREW HHC M6-1.0 X 45 C8.8 FTH
15	022097	5	WASHER LOCK M6-1/4
16	047527	1	BARBED STR 1/2 NPT X 3/4
17	0E8286	1	STREET EL 45D 1/2 NPT BRASS
18	0G4573C	1	MIXER ACTUATOR 32MM MACHINED
19	0E7121	2	O-RING 47.625 ID X 2.38 WIDTH
20	0F7790H	1	VENTURI THROTTLE 19MM
22	059057	1	HOSE 3/4 ID SAE-30R2 (18" LG)
23	0G9348	1	ASSY REG INLET NPT FITTINGS
(1) 24	026812	2	ELBOW 90D 3/4 NPT
(1) 25	076691	1	NIPPLE PIPE 3/4NPTX4.5 BLK IRN
(1) 26	026915	1	NIPPLE CLOSE 3/4 X 1.375
(1) 27	075580	1	FLANGE FUEL INLET
28	022129	2	WASHER LOCK M8-5/16
29	045771	2	NUT HEX M8-1.25 G8 YEL CHR
32	039253	2	SCREW HHC M8-1.25 X 20 G8.8
33	022145	2	WASHER FLAT 5/16 ZINC
34	0H7436	1	HARN FUEL JUMPER SINGLE REG
35	0G1397C	1	FUEL REG REWORK 2.4 1800 22/27
36	0E0519A	1	ADAPTER, CARBURETOR W/PVC CONN
37	048031J	2	CLAMP HOSE BAND .63
(1) 38	026490	1	NIPPLE PIPE 3/4NPT X 2

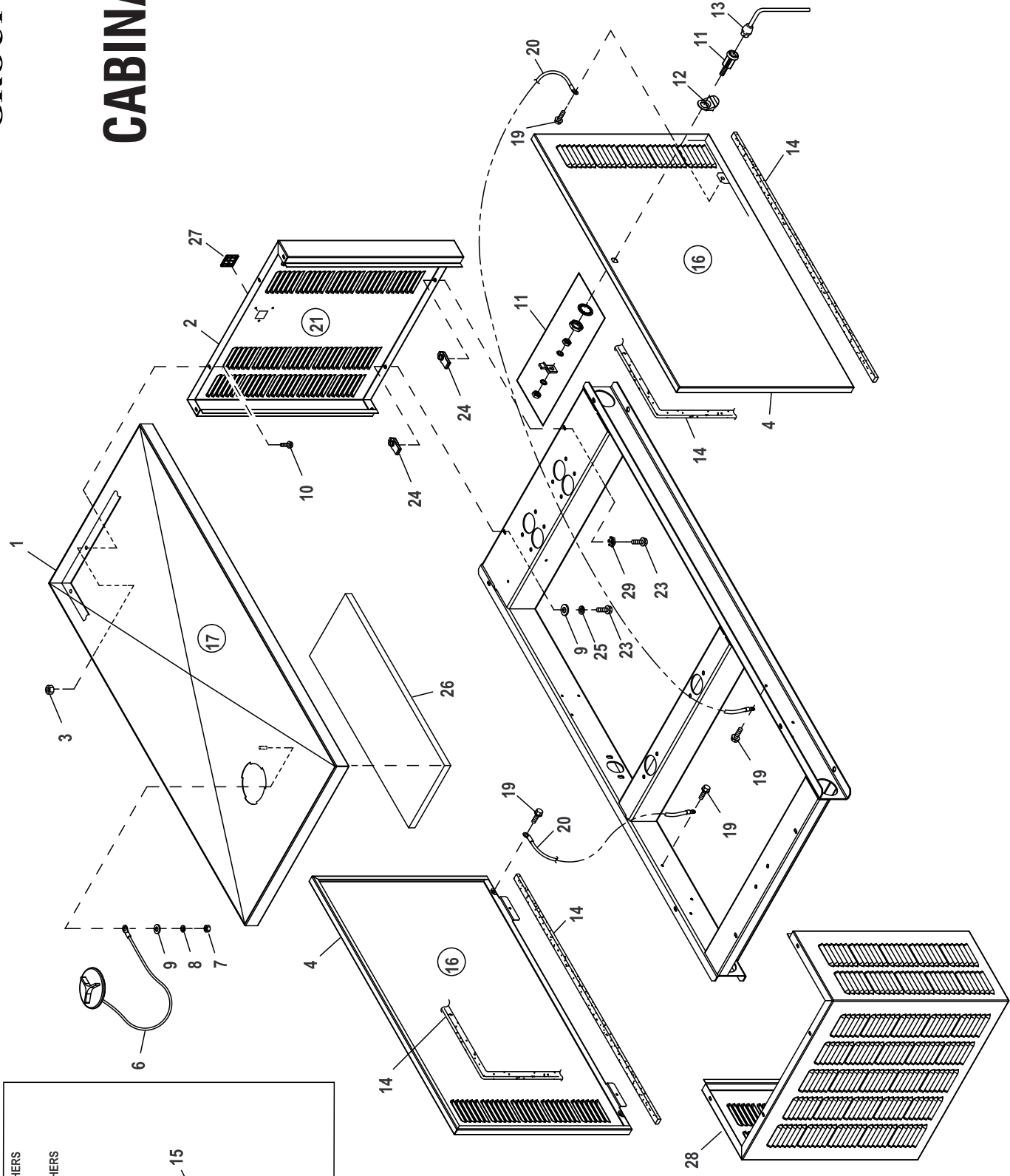
(1) INCLUDED IN I/N 23 (ASSY REG INLET NPT FITTINGS)

REGULATOR NOTES:

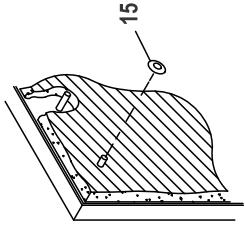
REGULATOR (I/N 11) AS SHOWN IN ILLUSTRATION IS SET UP FOR NATURAL GAS APPLICATION.
 TO CONFIGURE REGULATOR FOR LP VAPOR, REFER TO THE "RECONFIGURING THE FUEL SYSTEM" SECTION OF THIS MANUAL.

GROUP F

CABINA



- INSULATION AND DOME WASHERS LOCATED ON THE NEAR SIDE.
- INSULATION AND DOME WASHERS LOCATED ON THE FAR SIDE.



TYPICAL MOUNTING OF ROOF ACOUSTIC INSULATION.

EXPLODED VIEW: EV ENCLOSURE C1 CPL**DRAWING #: 0G3534****GROUP F**

ITEM	PART#	QTY.	DESCRIPTION
(2) 1	0G33370AL0R	1	ROOF 1.6L C1
(2) 2	0J14640AL0R	1	REAR INTAKE WRAP C1
(1) 3	077992	10	NUT HEX LOCK M6-1.0 SS NY INS
(2) 4	0J14630AL0R	2	DOOR LEFT/RIGHT SIDE C1
6	0F4487A	1	ASSY ACCESS COVER
7	022127	1	NUT HEX 1/4-20 STEEL
8	022097	1	WASHER LOCK M6-1/4
9	022473	10	WASHER FLAT 1/4-M6 ZINC
(1)10	0C2454	8	SCREW THF M6-1 X 16 N WA Z/JS
11	0F5048D	2	WISE-ACTION LATCH, SLOTTED CIR
12	0F5049B	2	PULL TAB DOOR LOCK SS
13	0F8869D	1	KEY VISE-ACTION LATCH,SLOT CIR
14	089961	1	FOAM STRIP 3/4"WIDE X 3/16"THK (294"LG)
15	078115	8	WASHER SELF LOCKING DOME
16	0H7518	2	INSULATION SIDE DOOR C1
17	0H7518A	1	INSULATION ROOF C1
(1)19	0E3257	6	SCREW HWHTF M6-1.0 X 16
20	0912970090	2	ASSY WIRE 14AWG GRN/YEL (32.25"LG)
21	0H7518B	1	INSULATION REAR C1
23	0C8566	10	SCREW HHFC M6-1.0 X 20 G8.8
24	0H0412	10	NUT SPRINGCLIP M6-1.0
25	022097	8	WASHER LOCK M6-1/4
(3) 26	0H7529	1	FOIL ALUMINUM WITH ADHESIVE
27	0H1208A	1	RF COVER PLATE-PLASTIC-BISQUE
	0H1208B	1	RF COVER PLATE-PLASTIC-GREY
(2) 28	0G33350AL0R	1	FRONT DISCHARGE WRAP 1.6L C1
(1)29	0A1658	2	WASHER LOCK SPECIAL 1/4"

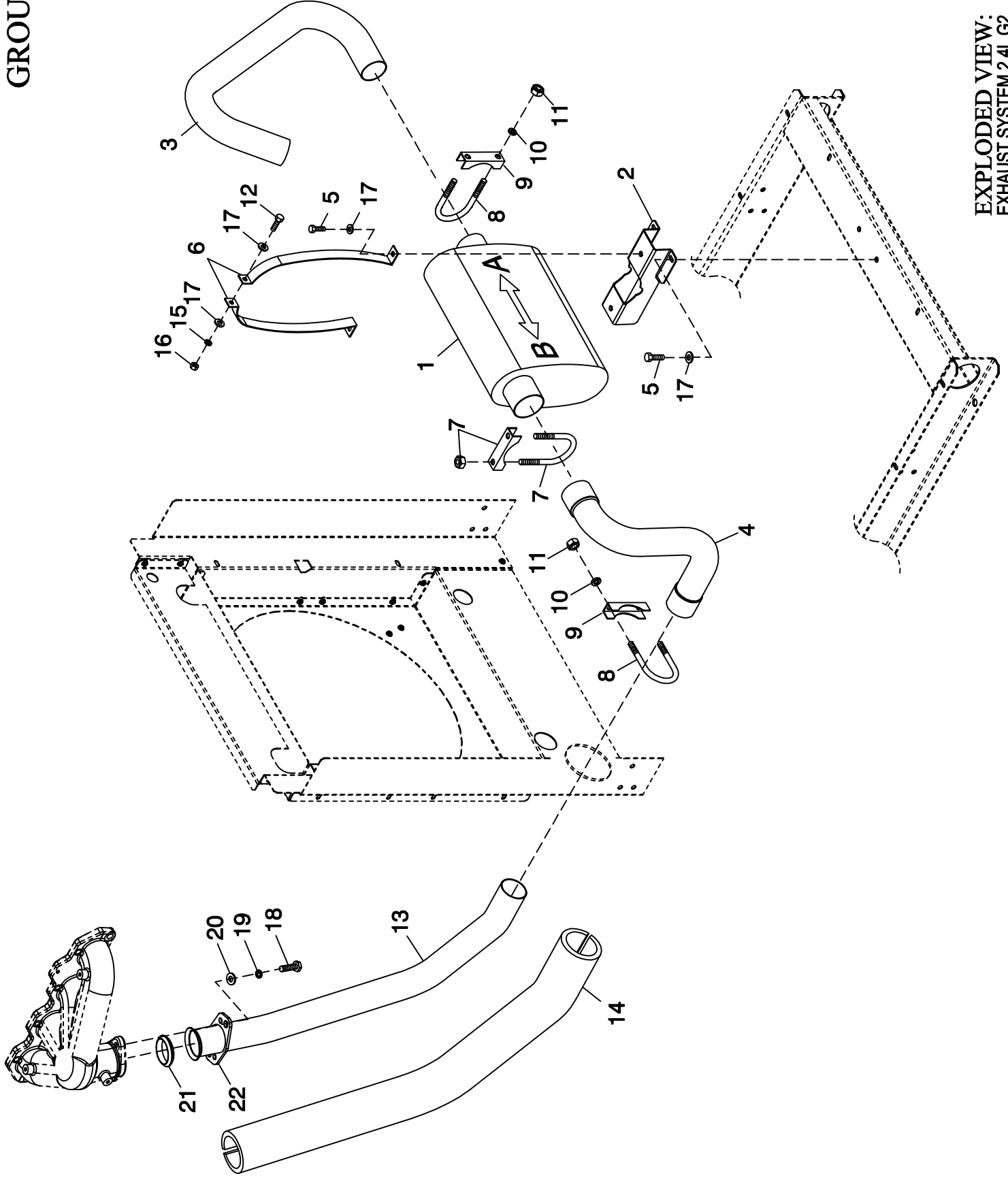
(1)ENCLOSURE NOTE: ALL PANELS THAT FASTEN TO THE ROOF MUST BE SECURED USING I/N 10 (THREAD FORMING FASTENER) AND I/N 3 (LOCK NUT) AND TO INCLUDE AT LEAST ONE CONNECTION POINT USING I/N 19 (THREAD FORMING FASTENER) WITH I/N 3 (LOCK NUT) TO EACH PANEL. LOCK NUT IS TO BE INSTALLED AFTER THREAD FORMING FASTENER HAS PENETRATED THROUGH EXTRUSION IN ENCLOSURE PANELS. ALL PANEL TO BASEFRAME CONNECTIONS TO INCLUDE AT LEAST ONE CONNECTION POINT USING I/N 29 (WASHER SPECIAL).

(2) SHEET METAL PARTS LISTED IN THE BOM TABLE ARE REPRESENTING GENERIC PARTS (NO COLOR)

- MANUFACTURING: FOR CORRECT MATERIAL AND COLOR REFER TO AS400 BOM.
- CUSTOMER: WHEN ORDERING REPLACEMENT PARTS ENTER BASE NUMBER (FIRST 6 DIGITS ONLY) IN THE SYSTEM FOR CORRECT MATERIAL AND COLOR (FOR REFERENCE SEE GUIDELINE 0H7169).

(3) USED ON 1.5L / 1.6L UNITS ONLY.1

GROUP F



EXPLODED VIEW:
EXHAUST SYSTEM 2.4L G2
DRAWING #: 0G8890

EXPLODED VIEW: EXHAUST SYSTEM 2.4L G2**DRAWING #: 0G8890****GROUP F**

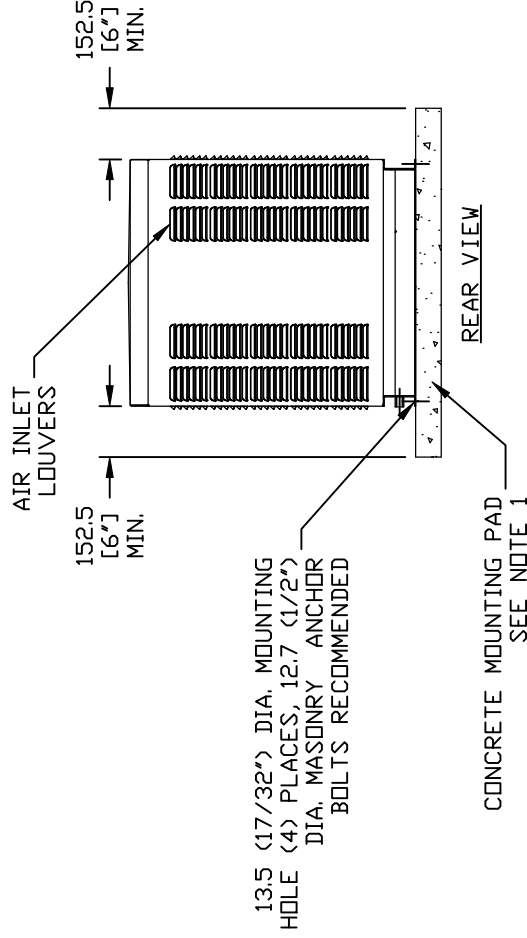
APPLICABLE TO:

ITEM	PART #	QTY.	DESCRIPTION
1	0F7366	1	MUFFLER C1
2	0F7647	1	MUFFLER SADDLE
3	0F8095	1	PIPE EXHAUST OUTLET
4	0G8614	1	EXHAUST ELBOW 2.4L G2
5	0E3257	4	SCREW HWHTF M6-1.0 X 16
6	0F7644	2	MUFFLER STRAP
7	0C6119	1	BOLT U 5/16-18 X 2-1/4
8	036434	2	BOLT U 5/16-18 X 2.09
9	036449	2	SADDLE 2 INCH
10	022129	4	WASHER LOCK M8-5/16
11	022259	4	NUT HEX 5/16-18 STEEL
12	038750	1	SCREW HHC M6-1.0 X 30 G8.8
13	0G8613	1	EXHAUST PIPE 2.4L G2
14	0F3794B	1	EXHAUST BLANKET 700MM LONG
15	022097	1	WASHER LOCK M6-1/4
16	049813	1	NUT HEX M6 X 1.0 G8 YEL CHR
17	022473	6	WASHER FLAT 1/4-M6 ZINC
18	0D2611	2	SCREW HHC 3/8-16 X 1-3/4 SS
19	085917	2	WASHER LOCK 3/8 SS
20	088775	2	WASHER FLAT 3/8 SS
21	044149	1	GASKET EXHAUST RING
22	0E8816	1	FLANGE EXHAUST 2" PIPE

GROUP G

NOTES:

- 1) MINIMUM RECOMMENDED CONCRETE PAD SIZE: 1041 (41.0") WIDE X 1892 (74 1/2") LONG. REFERENCE INSTALLATION GUIDE SUPPLIED WITH UNIT FOR CONCRETE PAD GUIDELINES.
- 2) ALLOW SUFFICIENT ROOM ON ALL SIDES OF THE GENERATOR FOR MAINTENANCE AND SERVICING. THIS UNIT MUST BE INSTALLED IN ACCORDANCE WITH CURRENT APPLICABLE NFPA 37 AND NFPA 70 STANDARDS AS WELL AS ANY OTHER FEDERAL, STATE AND LOCAL CODES FOR MINIMUM DISTANCES FROM OTHER STRUCTURES.
- 3) CIRCUIT BREAKER INFORMATION:
SEE SPECIFICATION SHEET WITHIN OWNERS MANUAL.
- 4) INSIDE STUB-UP AREA FOR AC LOAD LEAD CONDUIT CONNECTION, NEUTRAL CONNECTION, BATTERY CHARGER 120 VOLT AC (0.5 AMP MAX.) CONNECTION, ACCESS TO TRANSFER SWITCH CONTROL WIRES, AND TRANSFER SWITCH CONNECTION (IF SO EQUIPPED). REMOVE FRONT COVER FOR ACCESS.
- 4A) ONE 1-1/2" NEMA ELECTRICAL KNOCKOUT AND TWO 1/2" NEMA ELECTRICAL KNOCKOUTS PROVIDED FOR OUTSIDE AC LOAD CONDUIT CONNECTION, NEUTRAL CONNECTION, BATTERY CHARGER 120 VOLT AC (0.5 AMP MAX.) CONNECTION, ACCESS TO TRANSFER SWITCH CONTROL WIRES, AND TRANSFER SWITCH CONNECTION (IF SO EQUIPPED). REMOVE FRONT COVER FOR ACCESS.
- 5) REFERENCE OWNERS MANUAL FOR LIFTING WARNINGS.
- 6) REMOVE LIFT-OFF ENCLOSURE TO ACCESS EXHAUST MUFFLER.



WEIGHT DATA			
ENGINE/KW	ENCLOSURE MATERIAL	WEIGHT (GENSET ONLY) (KG [LBS])	WEIGHT (SHIPPING CARTON/SKID) (GENSET, SKID, & CARTON) (KG [LBS])
2. 4L/22KW	ALUMINUM	383 [843]	413 [909]
2. 4L/27KW	ALUMINUM	405 [891]	434 [957]

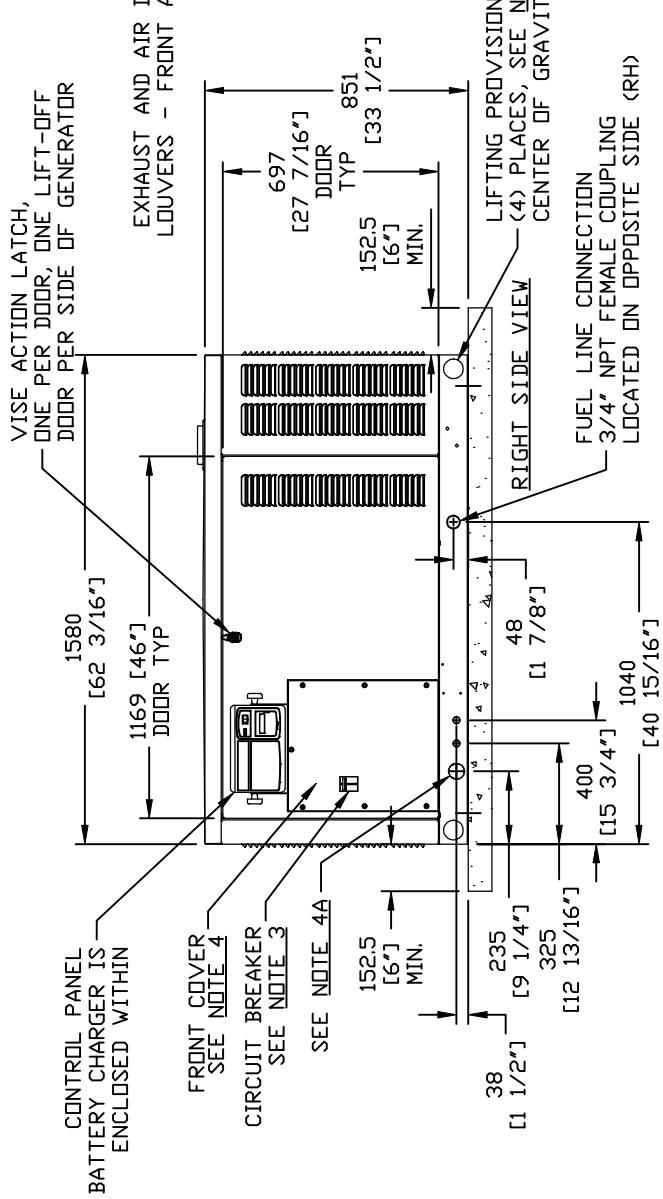
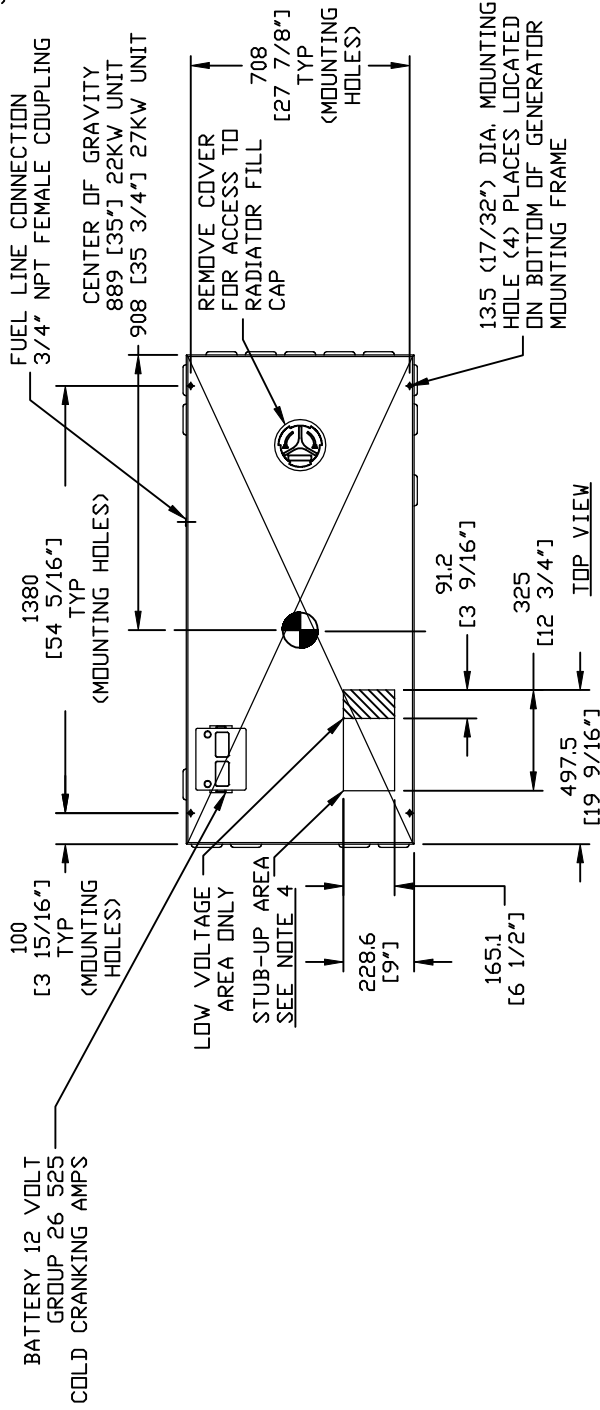
**EXPLODED VIEW:
INSTALLATION DRAWING C1 CPL
DRAWING #: 0G9370**

GROUP G

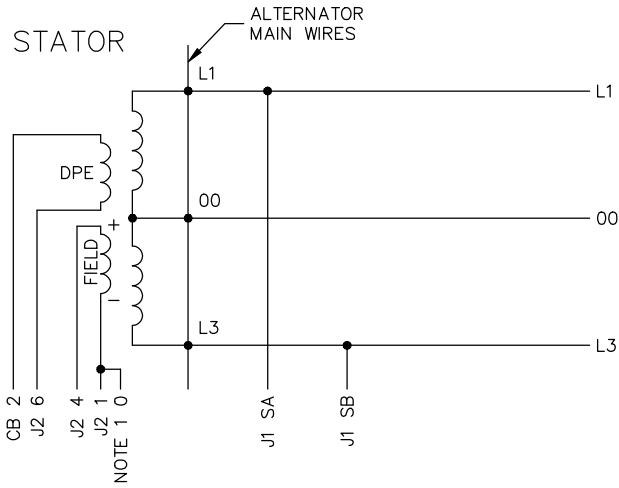
SERVICE ITEM ACCESSIBILITY CHART

SERVICE ITEM	ACCESS
OIL FILL CAP	THRU RIGHT DOOR
OIL DIP STICK	THRU RIGHT DOOR
OIL FILTER	THRU RIGHT DOOR
OIL DRAIN HOSE	THRU LEFT DOOR
RADIATOR DRAIN HOSE	THRU LEFT DOOR
AIR CLEANER ELEMENT	THRU LEFT DOOR
SPARK PLUGS	THRU LEFT DOOR
MUFFLERS	SEE NOTE 6
FAN BELT	THRU RIGHT DOOR
BATTERY	THRU LEFT DOOR

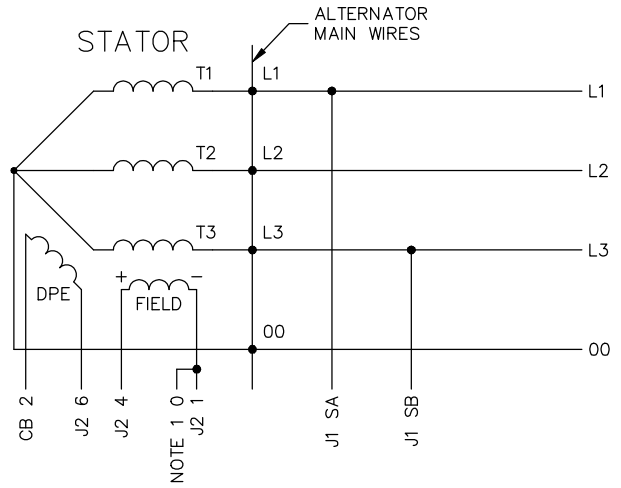
REFERENCE OWNERS MANUAL
FOR PERIODIC REPLACEMENT
PART LISTINGS



EXPLODED VIEW:
INSTALLATION DRAWING C1 CPL
DRAWING #: 0G9370



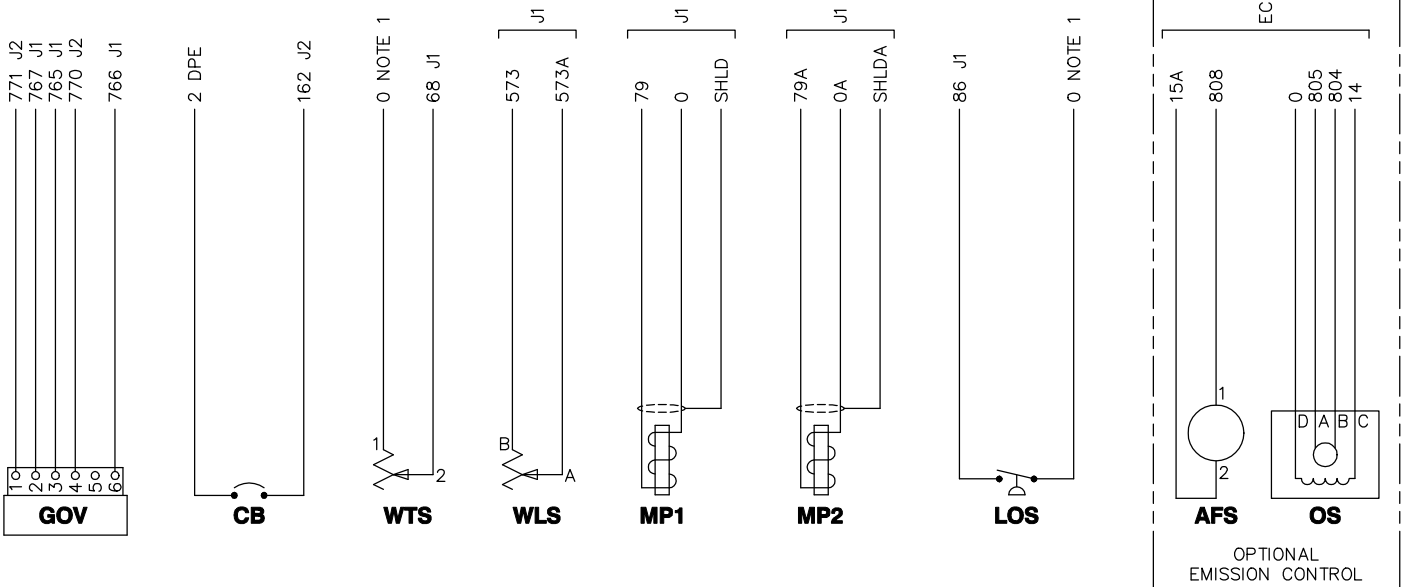
ALTERNATOR CONNECTIONS FOR 1φ UNITS

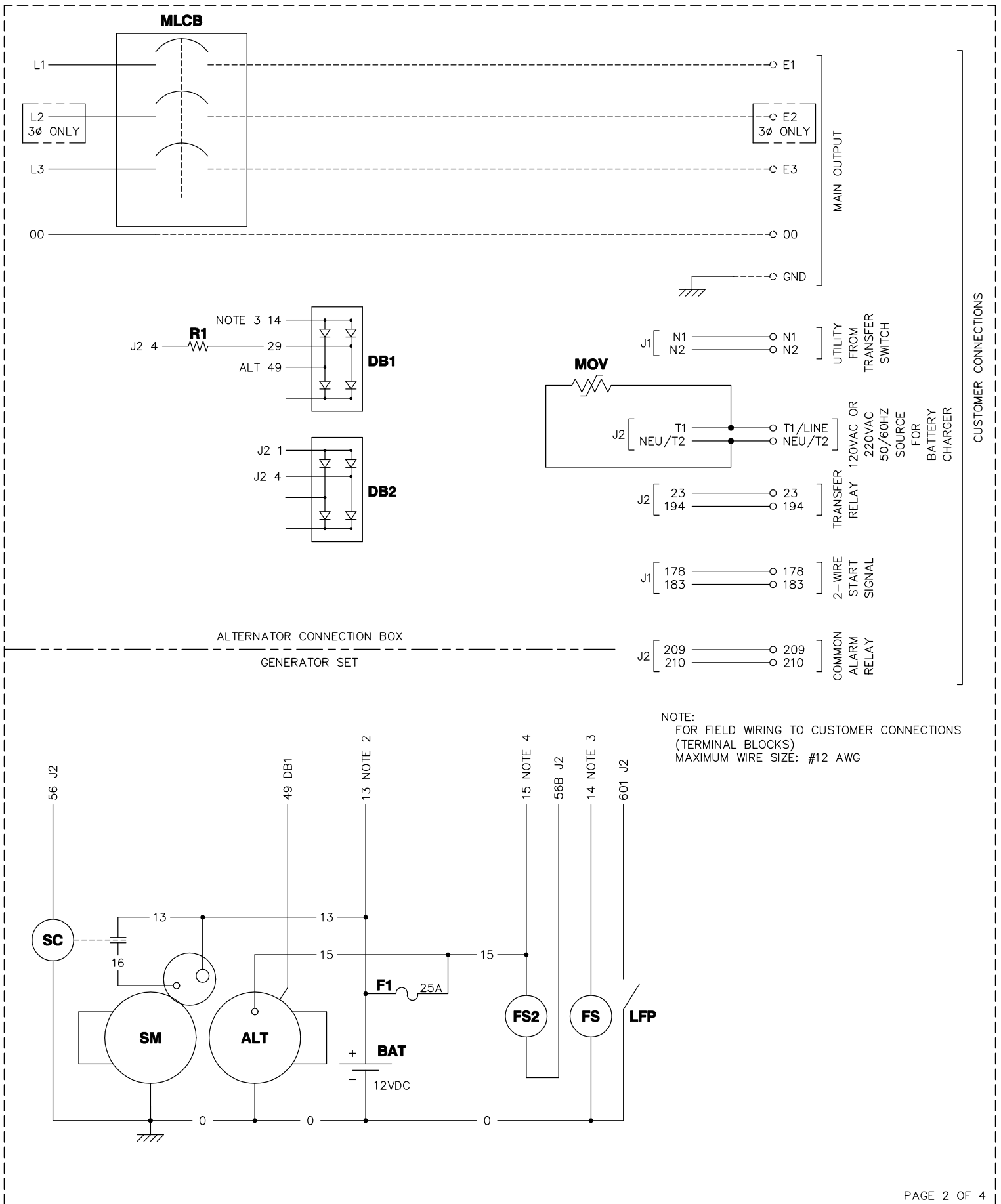


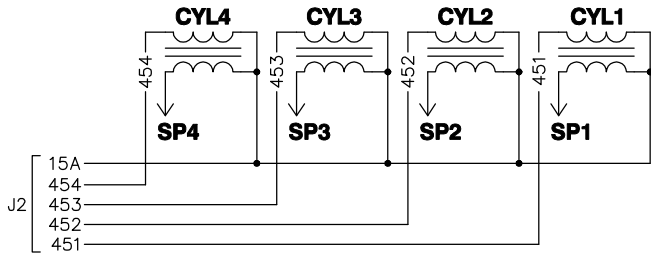
ALTERNATOR CONNECTIONS FOR 3φ UNITS

ALTERNATOR CONNECTION BOX

GENERATOR SET







NOTES:

- 1) WIRE #0 IS CHASSIS GROUND (BATTERY-) UNLESS NOTED OTHERWISE.
- 2) WIRE #13 IS UNFUSED +12VDC (BATTERY+).
- 3) WIRE #14 IS FUSED +12VDC WHEN GENERATOR IS CRANKING OR RUNNING.
- 4) WIRE #15 IS FUSED +12VDC FOR GENERAL USE.
- 5) WIRE #15A IS FUSED +12VDC FOR THE AIR/FUEL SOLENOID OPTION AND FOR THE IGNITION COILS.

BWR CONNECTOR

PIN	WIRE	TO	FUNCTION
1	820	J1-12	+5V POWER FOR BASIC REMOTE
2	817	J1-4	REMOTE DISPLAY SYSTEM READY
3	818	J1-5	REMOTE DISPLAY ALARM
4	819	J1-17	REMOTE DISPLAY MAINTENANCE
5	0	GND	NOTE 1

EC CONNECTOR

PIN	WIRE	TO	FUNCTION
1	0	GND	NOTE 1
2	14	J2-8	NOTE 3
3	15A	J2-23	NOTE 5
4	808	J2-2	AIR/FUEL RATIO SOLENOID DRIVER
5	805	J1-35	OXYGEN SENSOR RETURN
6	804	J1-34	OXYGEN SENSOR +

ENGINE CONTROL MODULE CONNECTIONS

J1

PIN	WIRE	TO	FUNCTION
1	178	CUST CON	REMOTE START RETURN
4	817	BWR-2	REMOTE DISPLAY SYSTEM READY
5	818	BWR-3	REMOTE DISPLAY ALARM
6	15	F1	NOTE 4
7	15	F1	NOTE 4
8	0	GND	NOTE 1
9	0	GND	NOTE 1
10	0	MP1-2	FLYWHEEL SENSOR -
11	0A	MP2-2	CAM SENSOR -
12	820	BWR-1	+5V POWER FOR BASIC REMOTE
13	SA	MLCB	OUTPUT VOLTAGE SENSING A
14	183	CUST CON	REMOTE START
15	SHLDA	MP2-1	CAM SENSOR DRAIN
16	SHLD	MP1-1	FLYWHEEL SENSOR DRAIN
17	819	BWR-4	REMOTE DISPLAY MAINTENANCE
18	767	GOV-2	THROTTLE POSITION FEEDBACK RETURN
19	765	GOV-3	THROTTLE POSITION FEEDBACK SOURCE
20	766	GOV-6	THROTTLE POSITION FEEDBACK SIGNAL
21	68	WTS-2	COOLANT TEMP SIGNAL
22	79A	MP2-3	CAM SENSOR +
23	79	MP1-3	FLYWHEEL SENSOR +
24	SB	MLCB	OUTPUT VOLTAGE SENSING B
25	N1	CUST CON	UTILITY VOLTAGE SENSING 1
26	N2	CUST CON	UTILITY VOLTAGE SENSING 2
31	573A	WLS-A	COOLANT LEVEL SIGNAL RETURN
32	573	WLS-B	COOLANT LEVEL SIGNAL
33	86	LOS-NC	LOW OIL PRESSURE SIGNAL
34	804	EC-6	OXYGEN SENSOR +
35	805	EC-5	OXYGEN SENSOR RETURN

J2

PIN	WIRE	TO	FUNCTION
1	770	GOV-4	THROTTLE DRIVE HI
2	808	EC-4	AIR/FUEL RATIO SOLENOID DRIVER
3	56B	FS2	STARTING FUEL SOLENOID CONTROL
4	451	CYL1	IGNITION COIL DRIVE 1
5	452	CYL2	IGNITION COIL DRIVE 2
6	453	CYL3	IGNITION COIL DRIVE 3
7	454	CYL4	IGNITION COIL DRIVE 4
8	14	DB1/FS/EC-2	NOTE 3
9	771	GOV-1	THROTTLE DRIVE LO
11	209	CAR	COMMON ALARM RELAY
12	23	CUST CON	TRANSFER RELAY COIL CONTROL
13	194	CUST CON	TRANSFER RELAY COIL +
14	601	LFP	LOW FUEL PRESSURE
15	210	CAR	COMMON ALARM RELAY
16	6	DPE	EXCITER RETURN
17	162	CB	EXCITER OUTPUT (BREAKER PROTECTED)
18	4	FIELD	FIELD (BRUSH) +
19	1	FIELD	FIELD (BRUSH) -
20	T1	CUST CON	120VAC SOURCE FOR BATTERY CHARGER
21	NEU	CUST CON	120VAC RETURN FOR BATTERY CHARGER
22	56	SC	STARTER CONTACTOR DRIVER
23	15A	EC-3/CYL1-CYL4	NOTE 5

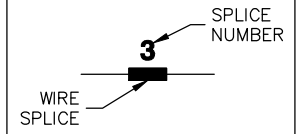
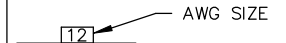
LEGEND

00 - NEUTRAL	EC - EMISSIONS CONNECTOR	OS - OXYGEN SENDER
AFS - AIR/FUEL SOLENOID	F1 - FUSE INLINE	R1 - RESISTOR
ALT - DC CHARGE ALTERNATOR	FS_ - FUEL SOLENOID	SC - STARTER CONTACTOR
BAT - BATTERY	GOV - ELECTRONIC GOVERNOR ACTUATOR	SHLD - SHIELD
BWR - BASIC WIRELESS RECEPTACLE	J_ - ENGINE CONTROL MODULE CONNECTOR	SM - STARTER MOTOR
CAR - COMMON ALARM RELAY	LFP - LOW FUEL PRESSURE SWITCH	SP_ - SPARK PLUG
CB - CIRCUIT BREAKER	LOS - LOW OIL PRESSURE SWITCH	WLS - COOLANT LEVEL SENDER
CYL_ - CYLINDER IGNITION COIL	MLCB - MAIN LINE CIRCUIT BREAKER	WTS - COOLANT TEMPERATURE SENDER
DB_ - DIODE BRIDGE	MOV - METAL OXIDE VARISTOR	
DPE - EXCITER	MP_ - MAGNETIC PICKUP	

LEGEND

AFS - AIR/FUEL SOLENOID	HVR - HIGH VOLTAGE RECEPTACLE 12-PIN
ALT - DC CHARGE ALTERNATOR	J1 - ENGINE CONTROL MODULE 35-PIN CONNECTOR
AS - ALTERNATOR STATOR	J2 - ENGINE CONTROL MODULE 23-PIN CONNECTOR
BA - BRUSH ASSEMBLY	LFP - LOW FUEL PRESSURE SWITCH
BAT - BATTERY	LOS - LOW OIL PRESSURE SWITCH
BWR - BASIC WIRELESS RECEPTACLE	LVP - LOW VOLTAGE PLUG 8-PIN (BULKHEAD)
CAR - COMMON ALARM RELAY	LVR - LOW VOLTAGE RECEPTACLE 8-PIN
CB - CIRCUIT BREAKER	MLCB - MAIN LINE CIRCUIT BREAKER
CYL - CYLINDER IGNITION COIL	MOV - METAL OXIDE VARISTOR
DB - DIODE BRIDGE	MP - MAGNETIC PICKUP
EC - EMISSIONS CONNECTOR	NB - NEUTRAL BLOCK
F1 - FUSE INLINE (25A ATO)	OS - OXYGEN SENDER
FS - FUEL SOLENOID	R1 - RESISTOR
FSP - FUEL SOLENOID PLUG	SC - STARTER CONTACTOR
FSR - FUEL SOLENOID RECEPTACLE	SM - STARTER MOTOR
GND - GROUND CONNECTION	TB - TERMINAL BLOCK, CAGE CLAMP
GOV - ELECTRONIC GOVERNOR ACTUATOR	WLS - COOLANT LEVEL SENDER
HVP - HIGH VOLTAGE PLUG 12-PIN (BULKHEAD)	WTS - COOLANT TEMPERATURE SENDER

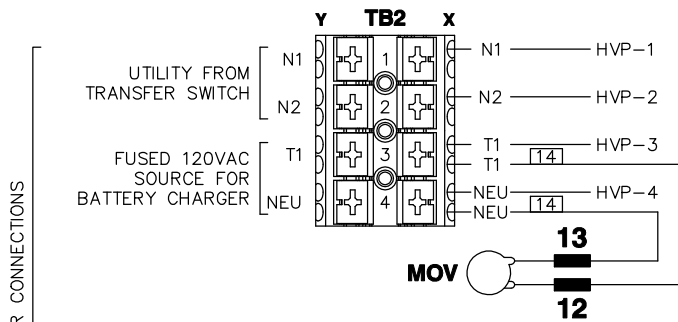
NOTE: ALL WIRES 18 AWG 300V UL LISTED UNLESS SHOWN OTHERWISE



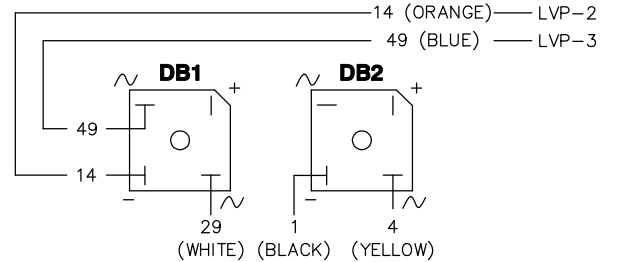
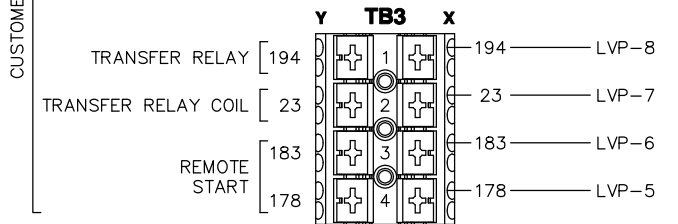
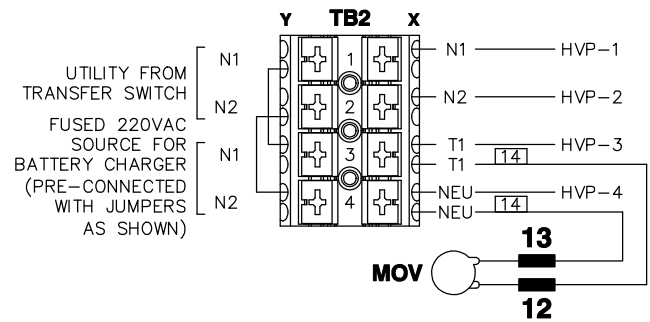
NOTE: ALL WIRES ON THIS PAGE ARE 600V RATED

COMPONENTS LOCATED IN CUSTOMER CONNECTION BOX

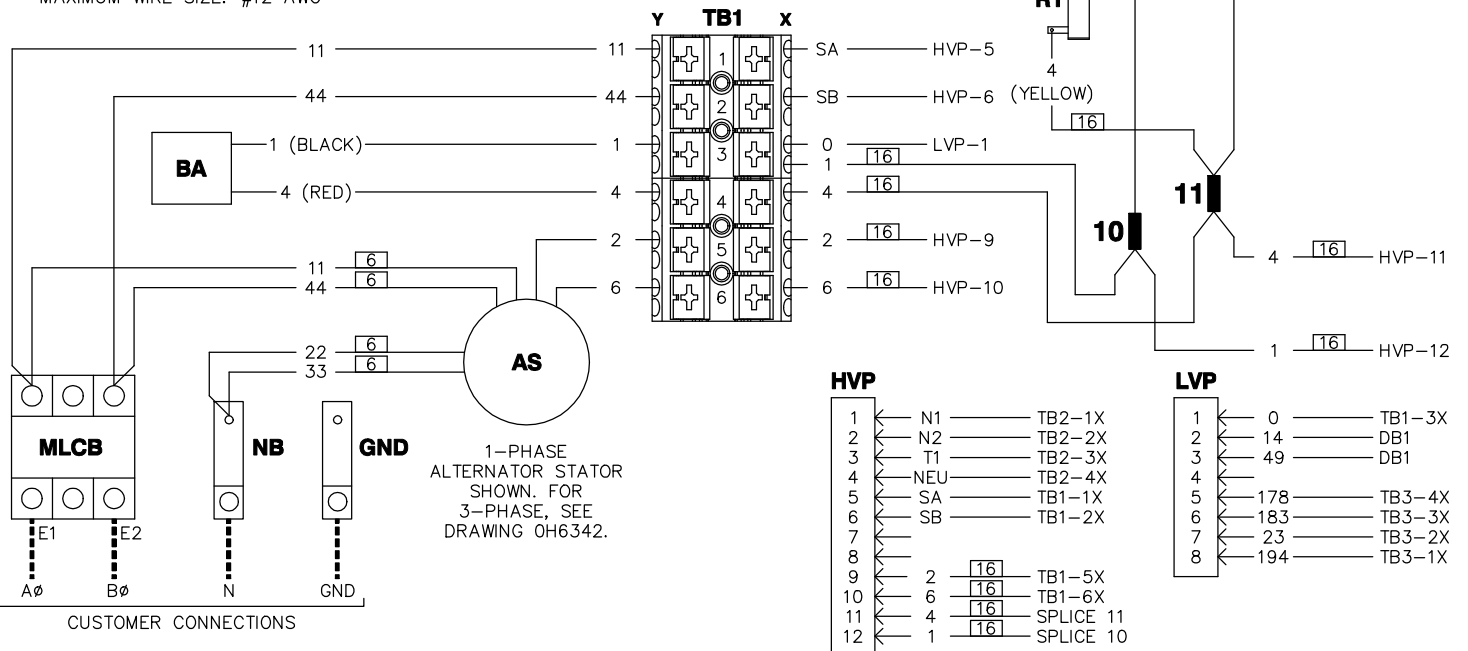
60HZ UNITS



50HZ (M-VOLTAGE, 220VAC)



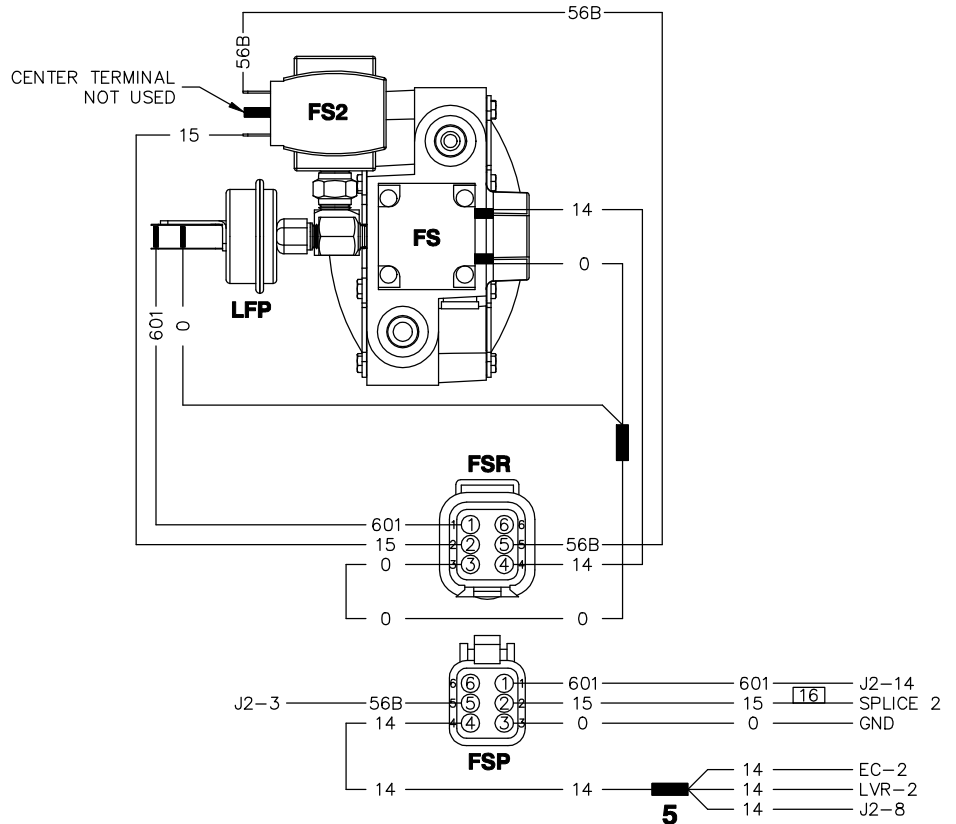
NOTE:
FOR FIELD WIRING TO CUSTOMER CONNECTIONS
(TERMINAL BLOCKS)
MAXIMUM WIRE SIZE: #12 AWG



COMPONENTS LOCATED ON ENGINE

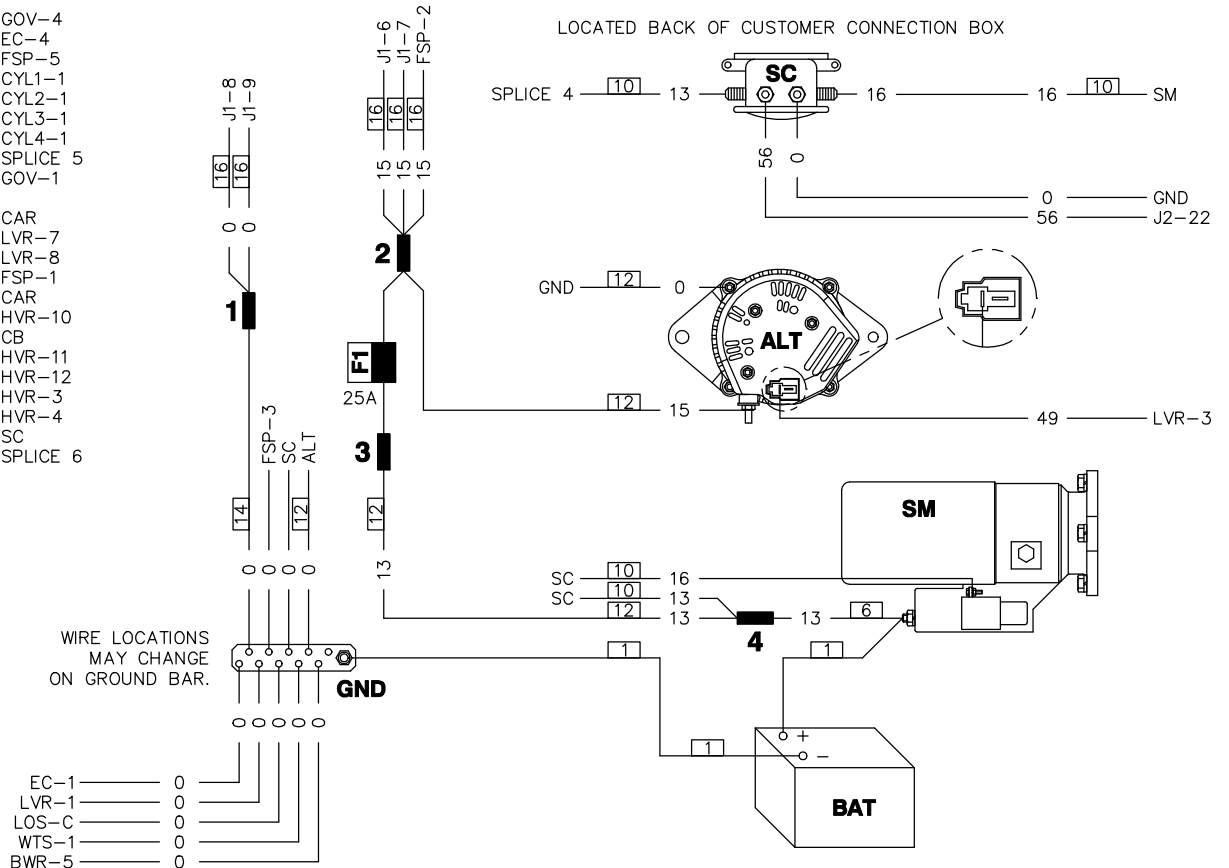
J1

1	178	LVR-5
2		
3		
4	817	BWR-2
5	818	BWR-3
6	15	SPLICE 2
7	15	SPLICE 2
8	0	SPLICE 1
9	0	SPLICE 1
10	0	MP1-2
11	0A	MP2-2
12	820	BWR-1
13	SA	HVR-5
14	183	LVR-6
15	SHLDA	MP2-1
16	SHLD	MP1-1
17	819	BWR-4
18	767	GOV-2
19	765	GOV-3
20	766	GOV-6
21	68	WTS-2
22	79A	MP2-3
23	79	MP1-3
24	SB	HVR-6
25	N1	HVR-1
26	N2	HVR-2
27		
28		
29		
30		
31	573A	WLS-A
32	573	WLS-B
33	86	LOS-NC
34	804	EC-6
35	805	EC-5



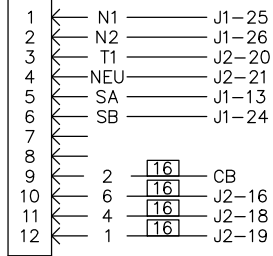
J2

1	770	GOV-4
2	808	EC-4
3	56B	FSP-5
4	451	CYL1-1
5	452	CYL2-1
6	453	CYL3-1
7	454	CYL4-1
8	14	SPLICE 5
9	771	GOV-1
10		
11	209	CAR
12	23	LVR-7
13	194	LVR-8
14	601	FSP-1
15	210	CAR
16	6	HVR-10
17	162	CB
18	4	HVR-11
19	1	HVR-12
20	T1	HVR-3
21	NEU	HVR-4
22	56	SC
23	15A	SPLICE 6

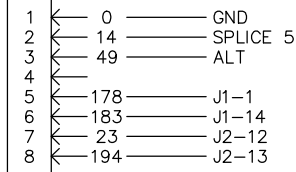


COMPONENTS LOCATED ON ENGINE

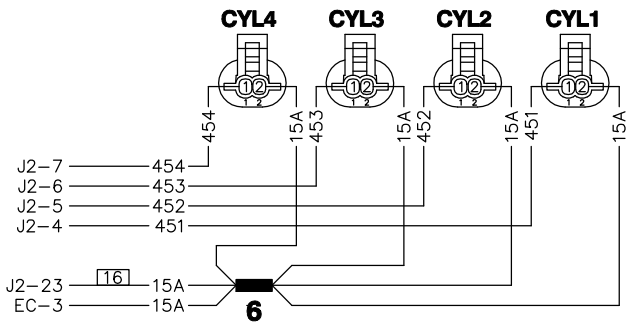
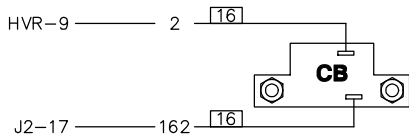
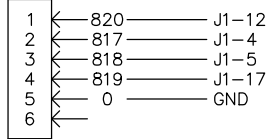
HVR



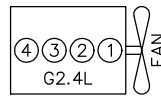
LVR



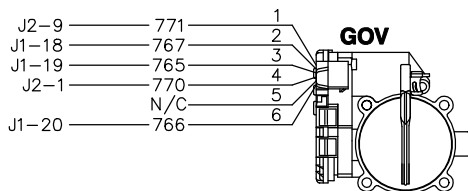
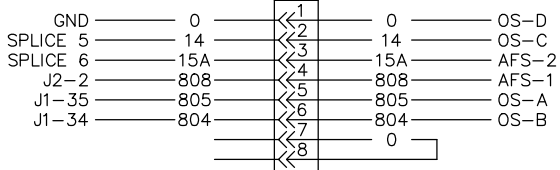
BWR



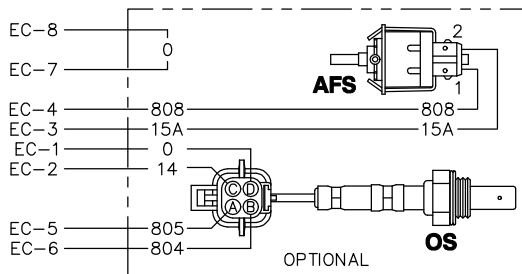
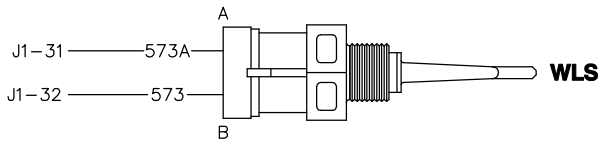
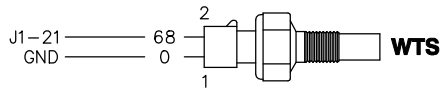
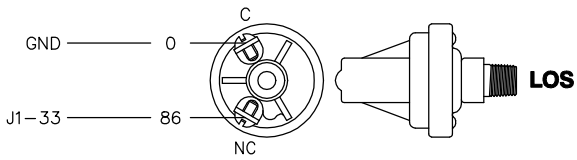
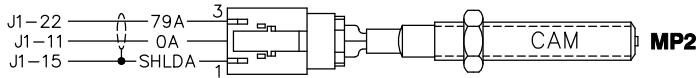
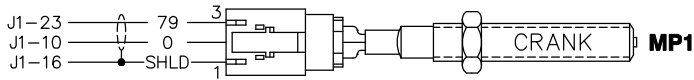
ENGINE BLOCK TOP VIEW



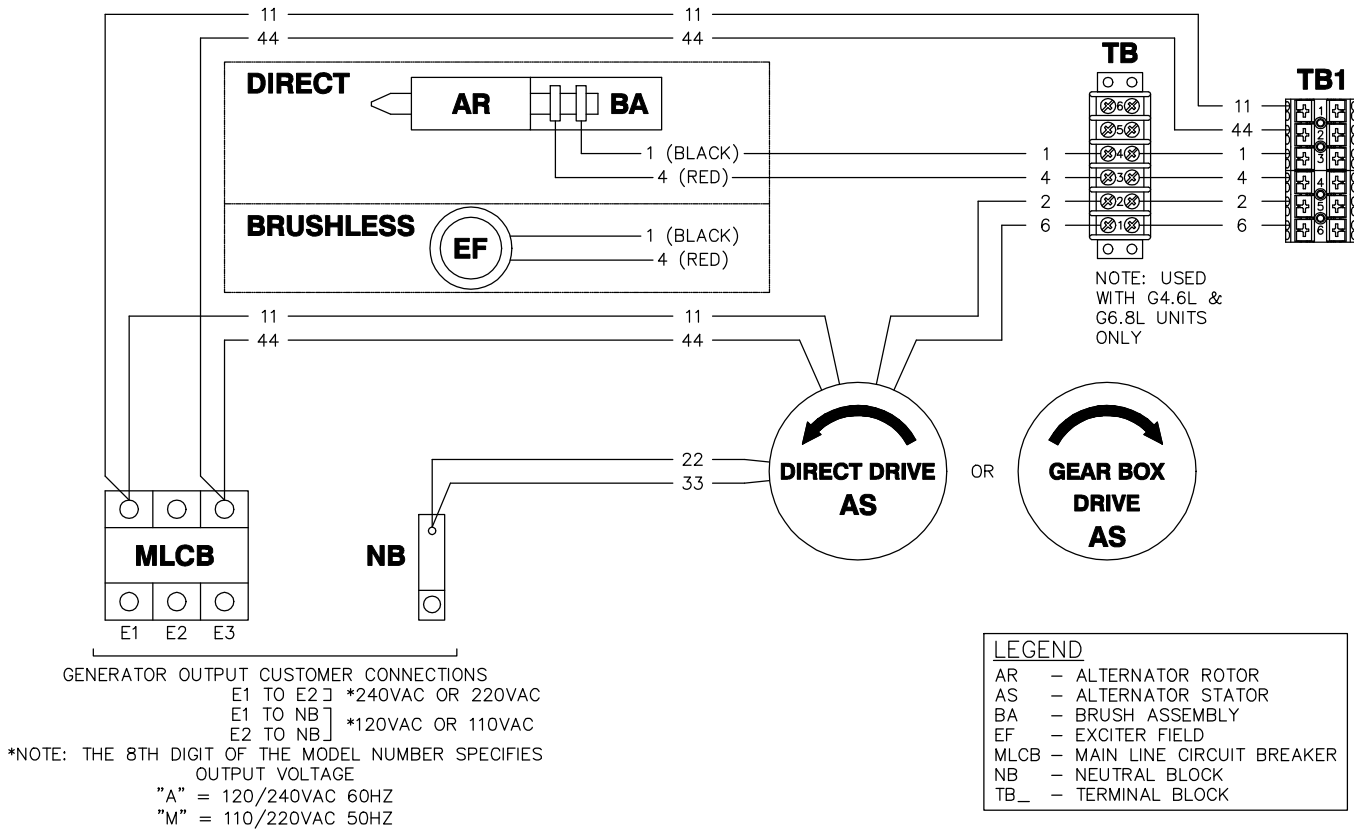
EC



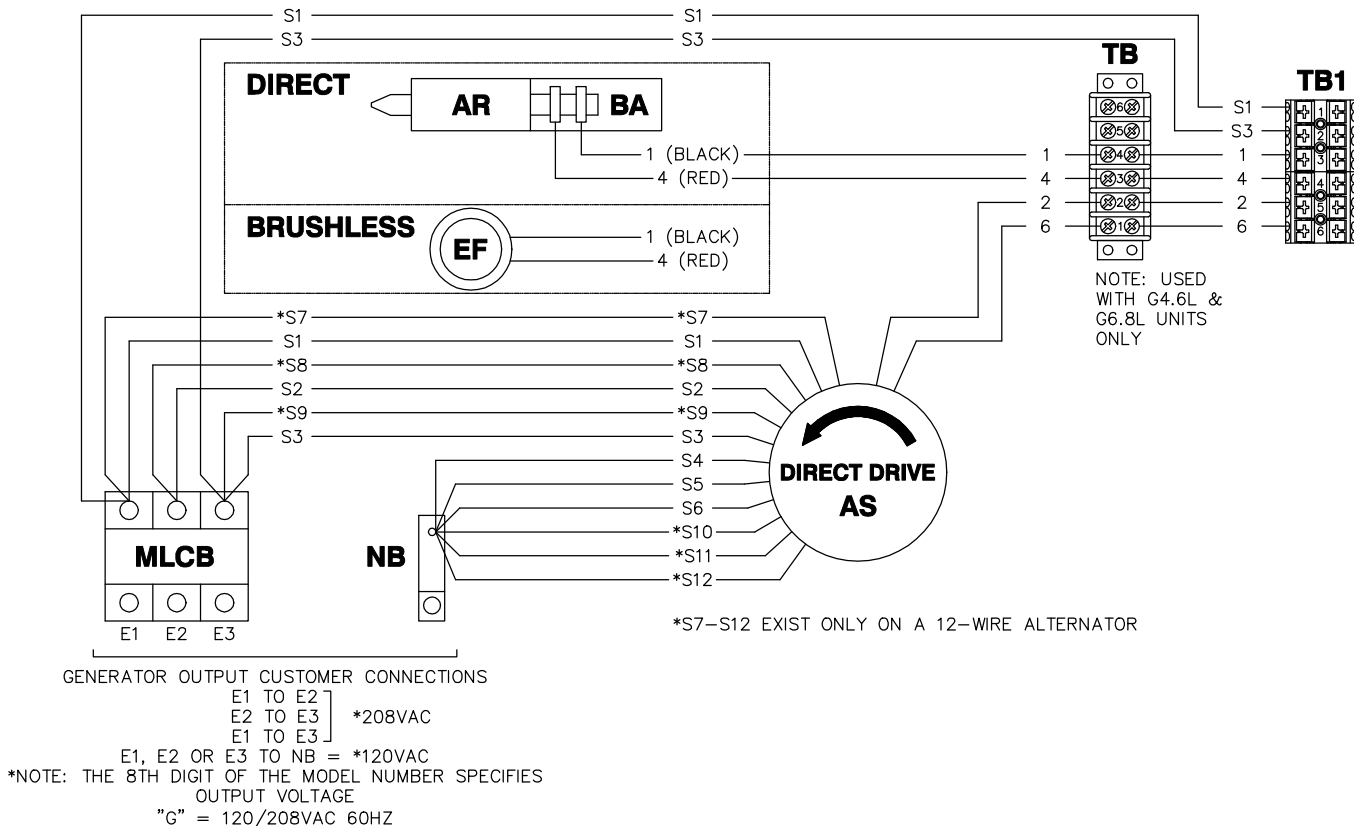
COMPONENTS LOCATED ON ENGINE



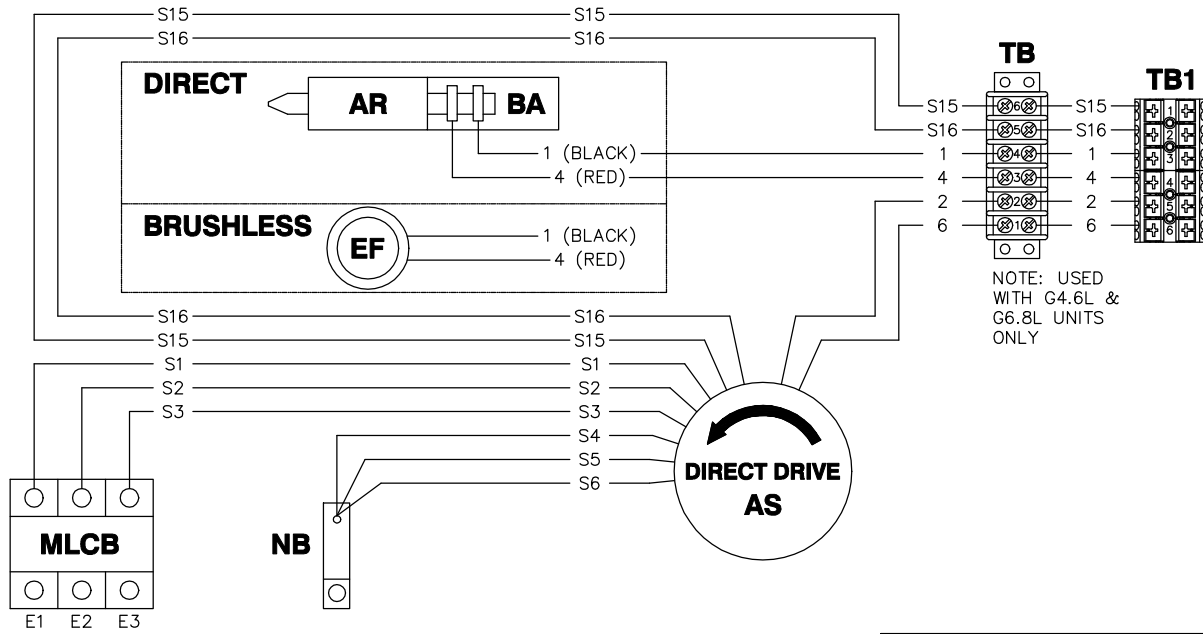
OPTION 1 - SINGLE PHASE, CPL CONTROL PANEL



OPTION 2 - THREE PHASE, CPL CONTROL PANEL, 120/208V



OPTION 3 - THREE PHASE, CPL CONTROL PANEL, 6-WIRE 277/480V



NOTE: USED WITH G4.6L & G6.8L UNITS ONLY

LEGEND	
AR	- ALTERNATOR ROTOR
AS	- ALTERNATOR STATOR
BA	- BRUSH ASSEMBLY
EF	- EXCITER FIELD
MLCB	- MAIN LINE CIRCUIT BREAKER
NB	- NEUTRAL BLOCK
TB_	- TERMINAL BLOCK

GENERATOR OUTPUT CUSTOMER CONNECTIONS

E1 TO E2] *480VAC OR *400VAC
 E2 TO E3]
 E1 TO E3]

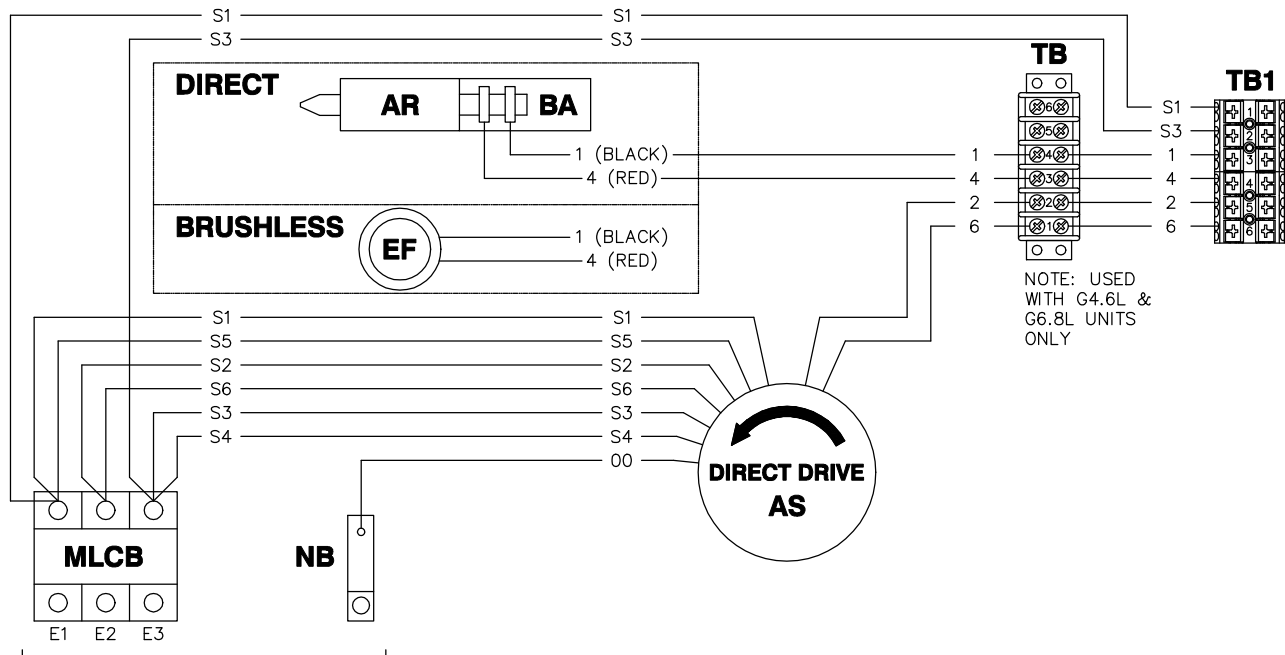
E1, E2 OR E3 TO NB = *277VAC OR *231VAC

*NOTE: THE 8TH DIGIT OF THE MODEL NUMBER SPECIFIES OUTPUT VOLTAGE

"K" = 277/480VAC 60HZ

"R" = 231/400VAC 50HZ

OPTION 4 - THREE PHASE DELTA, CPL CONTROL PANEL, 7-WIRE 120/240V



NOTE: USED WITH G4.6L & G6.8L UNITS ONLY

GENERATOR OUTPUT CUSTOMER CONNECTIONS

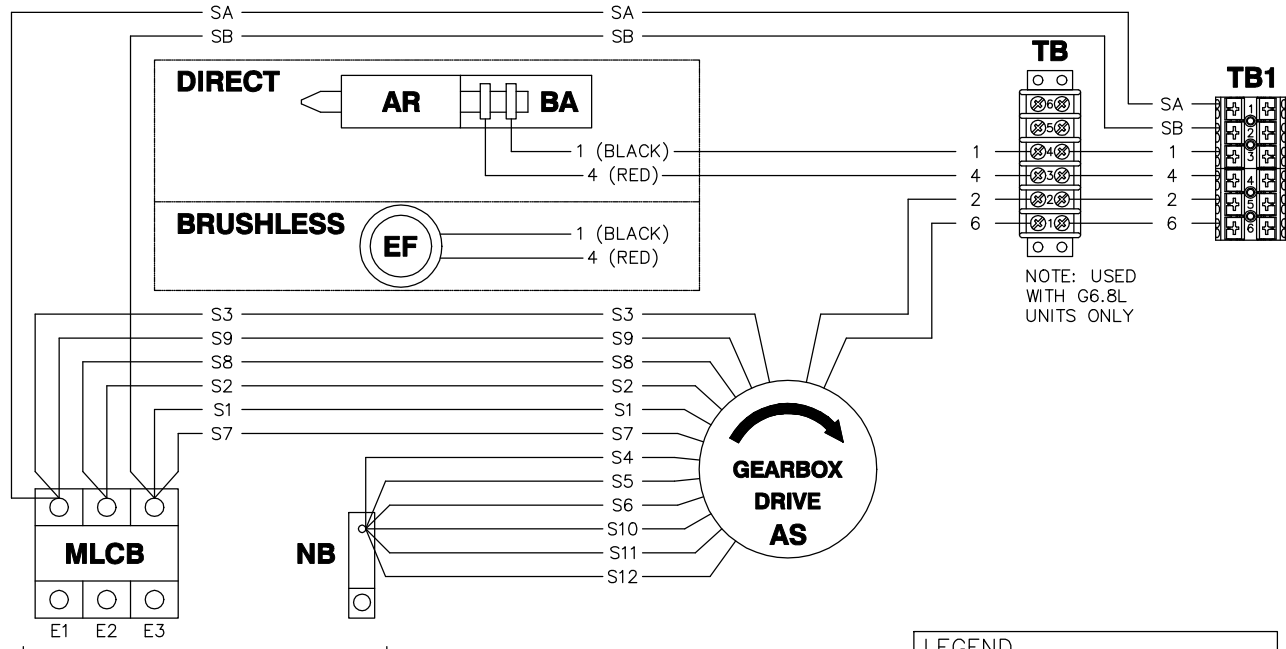
E1 TO E2] *240VAC
 E2 TO E3]
 E1 TO E3]

E1 OR E3 TO NB = *120VAC

*NOTE: THE 8TH DIGIT OF THE MODEL NUMBER SPECIFIES OUTPUT VOLTAGE

"J" = 120/240VAC 60HZ

OPTION 5 - THREE PHASE, CPL CONTROL PANEL, GEARBOX (REVERSE ROTATION)



NOTE: USED WITH G6.8L UNITS ONLY

LEGEND	
AR	- ALTERNATOR ROTOR
AS	- ALTERNATOR STATOR
BA	- BRUSH ASSEMBLY
EF	- EXCITER FIELD
MLCB	- MAIN LINE CIRCUIT BREAKER
NB	- NEUTRAL BLOCK
TB_	- TERMINAL BLOCK

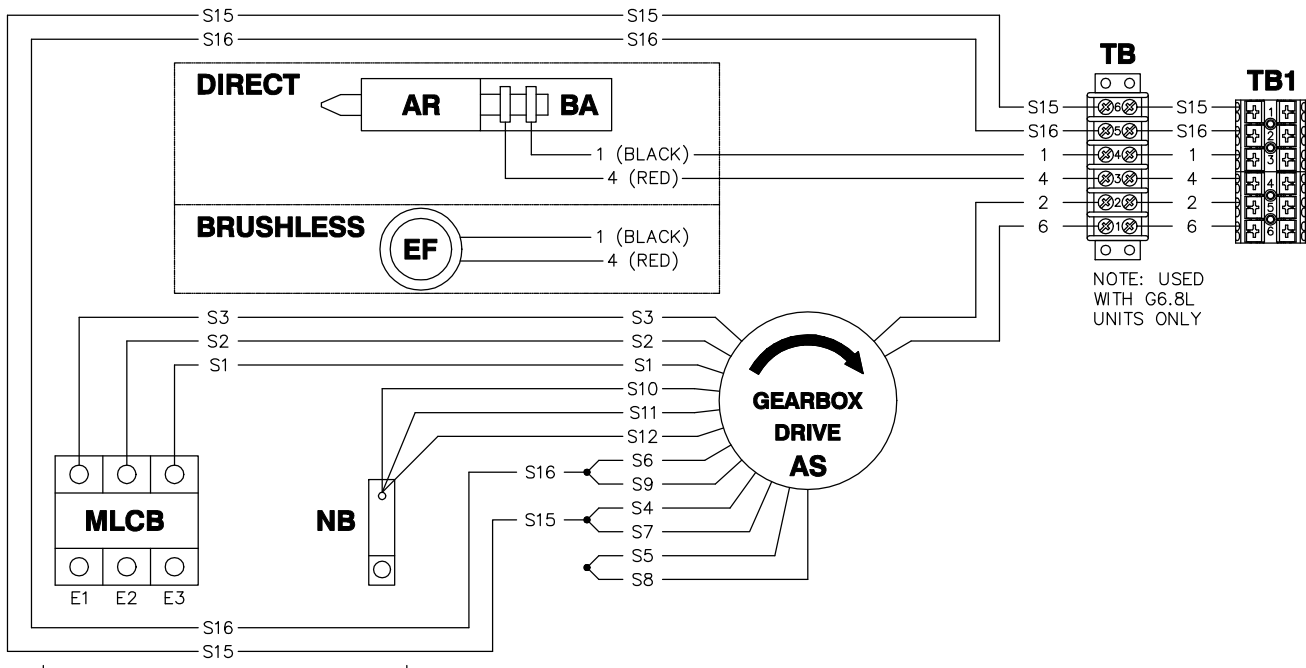
GENERATOR OUTPUT CUSTOMER CONNECTIONS

E1 TO E2] *208VAC
E2 TO E3]

E1 TO E3] *120VAC

*NOTE: THE 8TH DIGIT OF THE MODEL NUMBER SPECIFIES OUTPUT VOLTAGE
"G" = 120/208VAC 60HZ

OPTION 6 - THREE PHASE, CPL CONTROL PANEL, GEARBOX (REVERSE ROTATION)



NOTE: USED WITH G6.8L UNITS ONLY

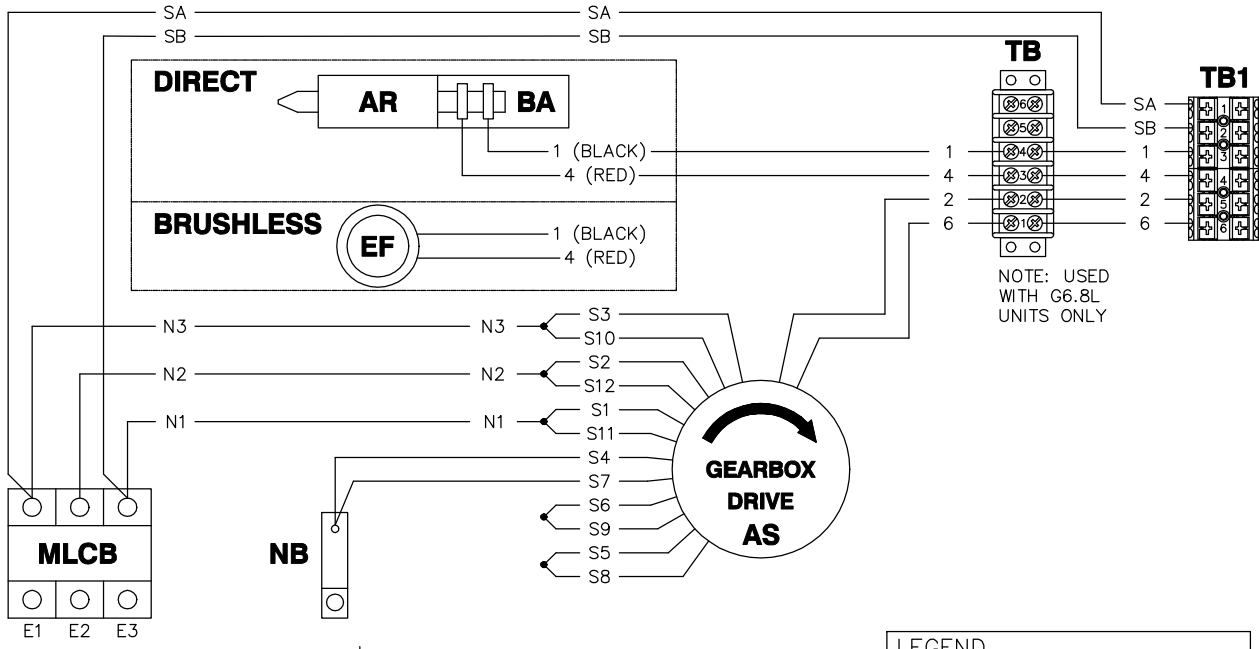
GENERATOR OUTPUT CUSTOMER CONNECTIONS

E1 TO E2] *480VAC
E2 TO E3]

E1 TO E3] *277VAC

*NOTE: THE 8TH DIGIT OF THE MODEL NUMBER SPECIFIES OUTPUT VOLTAGE
"K" = 277/480VAC 60HZ

OPTION 7 - THREE PHASE SERIES DELTA, CPL CONTROL PANEL, GEARBOX (REVERSE ROTATION)



NOTE: USED WITH G6.8L UNITS ONLY

GENERATOR OUTPUT CUSTOMER CONNECTIONS
 E1 TO E2] *240VAC
 E2 TO E3]
 E1 TO E3]
 E1-N OR E2-N OR E3-N = *120VAC
 *NOTE: THE 8TH DIGIT OF THE MODEL NUMBER SPECIFIES OUTPUT VOLTAGE
 "J" = 120/240VAC 60HZ

LEGEND	
AR	- ALTERNATOR ROTOR
AS	- ALTERNATOR STATOR
BA	- BRUSH ASSEMBLY
EF	- EXCITER FIELD
MLCB	- MAIN LINE CIRCUIT BREAKER
NB	- NEUTRAL BLOCK
TB_	- TERMINAL BLOCK